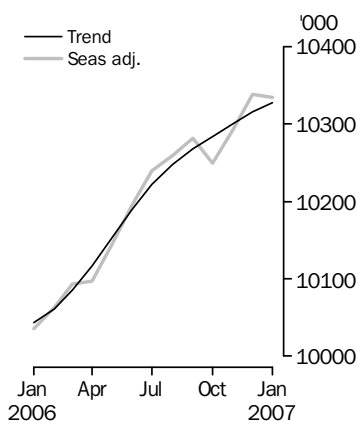


LABOUR FORCE

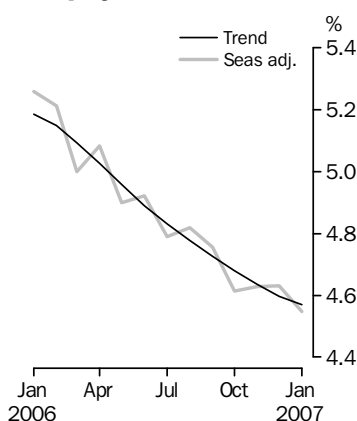
AUSTRALIA

EMBARGO: 11.30AM (CANBERRA TIME) THURS 8 FEB 2007

Employed Persons



Unemployment rate



INQUIRIES

For further information about these and related statistics, contact the National Information and Referral Service on 1300 135 070 or Bjorn Jarvis on Canberra (02) 6252 6525.

KEY FIGURES

	Dec 2006	Jan 2007	Dec 06 to Jan 07	Jan 06 to Jan 07
Trend				
Employed persons ('000)	10 315.3	10 327.9	12.5	2.8 %
Unemployed persons ('000)	496.9	494.5	-2.4	-9.9 %
Unemployment rate (%)	4.6	4.6	0.0 pts	-0.6 pts
Participation rate (%)	64.8	64.8	0.0 pts	0.4 pts
Seasonally Adjusted				
Employed persons ('000)	10 338.3	10 334.8	-3.6	3.0 %
Unemployed persons ('000)	501.9	492.5	-9.4	-11.6 %
Unemployment rate (%)	4.6	4.5	-0.1 pts	-0.7 pts
Participation rate (%)	65.0	64.8	-0.2 pts	0.4 pts

KEY POINTS

TREND ESTIMATES (MONTHLY CHANGE)

- EMPLOYMENT increased to 10,327,900
- UNEMPLOYMENT decreased to 494,500
- UNEMPLOYMENT RATE remained at 4.6%
- PARTICIPATION RATE remained at 64.8%

SEASONALLY ADJUSTED ESTIMATES (MONTHLY CHANGE)

EMPLOYMENT

- decreased by 3,600 to 10,334,800. Full-time employment increased by 3,200 to 7,384,800 and part-time employment decreased by 6,700 to 2,949,900.

UNEMPLOYMENT

- decreased by 9,400 to 492,500. The number of persons looking for full-time work decreased by 4,500 to 355,300 and the number of persons looking for part-time work decreased by 4,900 to 137,200.

UNEMPLOYMENT RATE

- decreased by 0.1 percentage point to 4.5%. The male unemployment rate decreased 0.1 percentage point but the rounded estimate remained at 4.3%, and the female unemployment rate decreased by 0.1 percentage point to 4.9%.

PARTICIPATION RATE

- decreased by 0.2 percentage points to 64.8%.

NOTES

FORTHCOMING ISSUES

<i>ISSUE</i>	<i>RELEASE DATE</i>
February 2007	15 March 2007
March 2007	12 April 2007
April 2007	10 May 2007
May 2007	7 June 2007
June 2007	12 July 2007
July 2007	9 August 2007

.....

ANNUAL REVIEW OF SEASONALITY

In addition to the ongoing monthly revision of seasonal factors, an annual review of seasonality is usually undertaken in February each year. The annual review does not normally result in significant changes to published estimates. The review for 2007 will be delayed until the second quarter of 2007.

ROUNDING

Estimates of monthly change shown on the front cover have been calculated using unrounded estimates, and may be different from, but are more accurate than, movements obtained from the rounded estimates. The graphs on the front cover also depict unrounded estimates.

SAMPLING ERRORS

The estimates in this publication are based on a sample survey. Because the entire population is not enumerated, the published estimates and the movements derived from them are subject to sampling variability. Standard errors give a measure of this variability and appear on pages 28 and 29.

The 95% confidence intervals below provide another way of looking at the variability inherent in estimates from sample surveys. The interval bounded by the two limits is the 95% confidence interval. A 95% confidence interval has a 95% chance of including the true value of the estimate.

MOVEMENTS IN SEASONALLY ADJUSTED SERIES BETWEEN DECEMBER 2006 AND JANUARY 2007

.....

	<u>Monthly change</u>	<u>95% Confidence interval</u>	
Total Employment	-3 600	-56 600	to 49 400
Total Unemployment	-9 400	-37 600	to 18 800
Unemployment rate	-0.1 pts	-0.3 pts	to 0.1 pts
Participation rate	-0.2 pts	-0.6 pts	to 0.2 pts

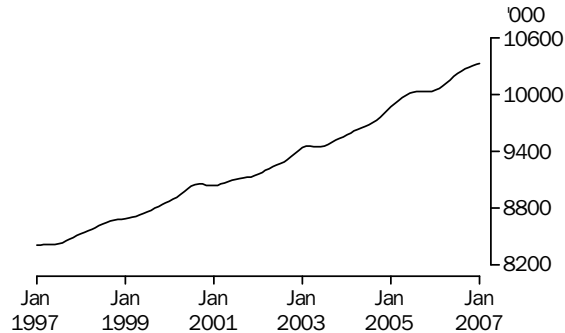
.....

Susan Linacre
Acting Australian Statistician

PRINCIPAL LABOUR FORCE SERIES TREND ESTIMATES

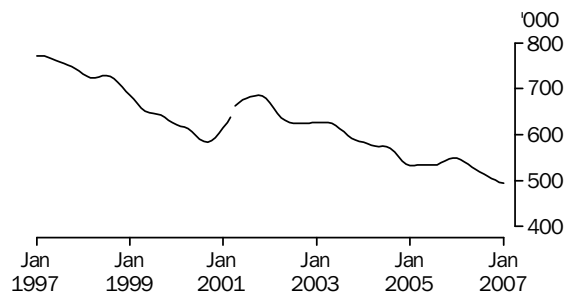
EMPLOYED PERSONS

The trend estimate of employed persons rose from 8,408,700 in January 1997 to 9,056,400 in September 2000. The trend then fell slightly to 9,037,500 in January 2001, before generally rising to stand at a high of 10,327,900 in January 2007.



UNEMPLOYED PERSONS

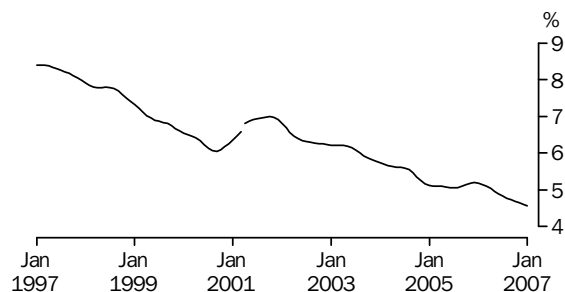
The trend estimate of unemployed persons generally fell from 771,000 in January 1997 to 583,700 in September 2000, before rising to 685,700 in October 2001. The trend then fell to 532,700 in January 2005, remained relatively stable for 18 months, before falling to stand at 494,500 in January 2007.



Series break at April 2001; see paragraph 16 of Explanatory Notes.

UNEMPLOYMENT RATE

The trend unemployment rate generally fell from 8.4% in January 1997 to 6.1% in September 2000. After rising to 7.0% in October 2001, the trend fell to 5.1% in January 2005. After remaining relatively stable for 18 months the trend has fallen to stand at 4.6% in January 2007.



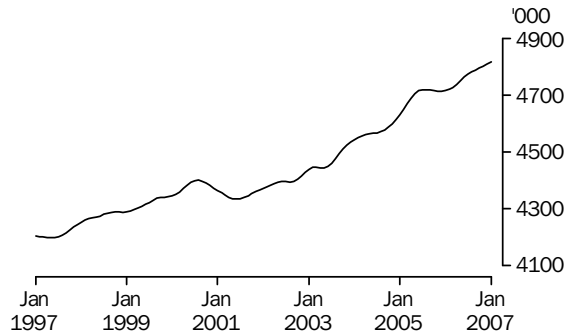
Series break at April 2001; see paragraph 16 of Explanatory Notes.

EMPLOYED PERSONS TREND ESTIMATES

MALES EMPLOYED FULL TIME

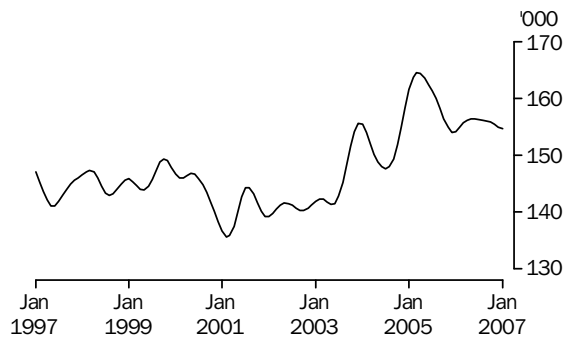
TOTAL

The trend estimate for males employed full time generally rose from 4,204,200 in January 1997 to 4,400,100 in August 2000, before falling to 4,334,200 in June 2001. Since then, the trend has risen to stand at 4,815,400 in January 2007.



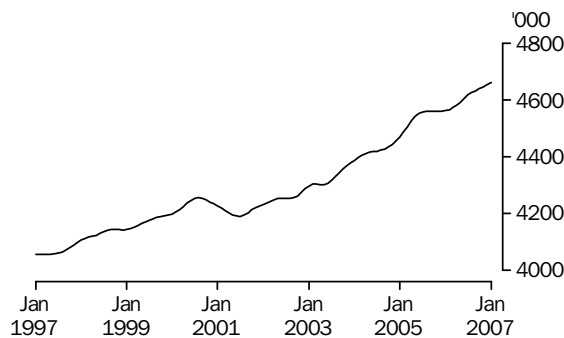
MALES AGED 15-19 YEARS

Although fluctuating, the trend estimates of males aged 15 to 19 years employed full time decreased from 147,000 in January 1997 to 135,700 in February 2001. Despite falls in 2001 and 2004, the trend increased to 164,500 in March 2005. Since then, the trend has generally fallen to stand at 154,600 in January 2007.



MALES AGED 20 YEARS AND OVER

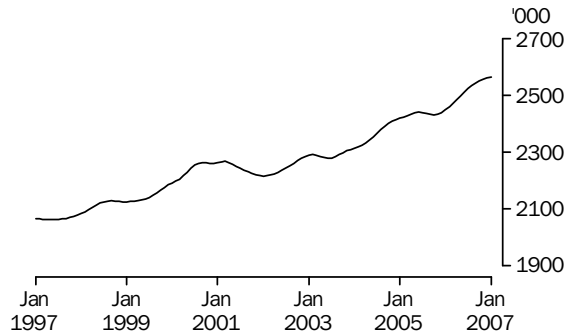
The trend estimate of males aged 20 years and over employed full time rose gradually from 4,057,200 in January 1997 to 4,255,200 in August 2000. After a slight fall to 4,191,000 in July 2001, the trend has since generally risen to stand at 4,660,800 in January 2007.



FEMALES EMPLOYED FULL TIME

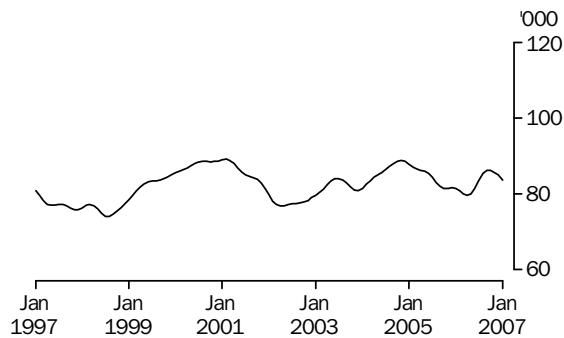
TOTAL

The trend estimate of females employed full time generally rose from 2,066,900 in January 1997 to 2,266,800 in March 2001. The trend then fell to 2,215,700 in January 2002, before generally rising to stand at 2,564,400 in January 2007.



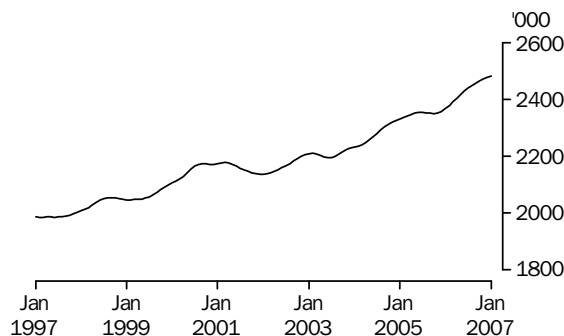
FEMALES AGED 15-19 YEARS

The trend estimate of females aged 15 to 19 years employed full time generally fell from 80,800 in January 1997 to 74,000 in August 1998. The trend rose to 89,200 in February 2001, before falling to 76,800 in April 2002. The trend then generally increased to 88,900 in November 2004 and, after falling to 79,600 in April 2006, has since increased to stand at 83,700 in January 2007.



FEMALES AGED 20 YEARS AND OVER

The trend estimate of females aged 20 years and over employed full time generally rose from 1,986,100 in January 1997 to 2,177,900 in March 2001. After falling slightly to 2,135,500 in December 2001, the trend has generally risen to stand at 2,480,700 in January 2007.



LABOUR FORCE STATUS (AGED 15 YEARS & OVER): Trend

	EMPLOYED			UNEMPLOYED			UNEMPLOYMENT RATE		Participation rate
	Full time	Part time	Total	Looking for f/t work	Total	Labour force	Looking for f/t work	Total	
	'000	'000	'000	'000	'000	'000	%	%	
MALES									
January 2004	4 542.9	785.7	5 328.6	254.4	311.3	5 639.9	5.3	5.5	71.7
January 2005	4 631.2	817.6	5 448.8	226.0	284.4	5 733.2	4.7	5.0	71.8
2006									
January	4 716.1	815.2	5 531.3	235.1	300.5	5 831.8	4.7	5.2	72.0
February	4 720.8	820.7	5 541.5	232.5	297.5	5 839.0	4.7	5.1	72.0
March	4 727.5	826.9	5 554.5	229.5	293.0	5 847.5	4.6	5.0	72.0
April	4 736.8	832.7	5 569.5	226.7	288.2	5 857.7	4.6	4.9	72.1
May	4 749.0	837.3	5 586.3	224.1	284.0	5 870.3	4.5	4.8	72.1
June	4 762.1	840.9	5 602.9	221.8	280.9	5 883.9	4.5	4.8	72.2
July	4 773.2	844.9	5 618.1	219.7	278.9	5 897.0	4.4	4.7	72.3
August	4 781.7	850.2	5 631.9	217.5	276.9	5 908.8	4.4	4.7	72.3
September	4 788.0	856.8	5 644.8	214.9	273.9	5 918.6	4.3	4.6	72.3
October	4 794.0	862.6	5 656.6	211.9	269.7	5 926.3	4.2	4.6	72.3
November	4 801.0	867.4	5 668.4	209.3	265.2	5 933.6	4.2	4.5	72.3
December	4 808.5	871.3	5 679.8	207.2	261.0	5 940.8	4.1	4.4	72.3
2007									
January	4 815.4	874.4	5 689.8	205.4	257.3	5 947.1	4.1	4.3	72.2
FEMALES									
January 2004	2 313.5	1 930.8	4 244.3	170.0	271.9	4 516.3	6.8	6.0	55.5
January 2005	2 418.9	2 002.4	4 421.3	154.6	248.3	4 669.6	6.0	5.3	56.6
2006									
January	2 448.1	2 064.3	4 512.4	152.5	248.6	4 761.0	5.9	5.2	57.0
February	2 458.8	2 060.7	4 519.6	151.6	248.6	4 768.1	5.8	5.2	57.0
March	2 470.4	2 060.3	4 530.7	150.1	248.1	4 778.8	5.7	5.2	57.1
April	2 483.2	2 063.6	4 546.9	148.4	247.3	4 794.1	5.6	5.2	57.2
May	2 496.4	2 070.4	4 566.8	146.8	245.7	4 812.5	5.6	5.1	57.4
June	2 509.6	2 077.3	4 587.0	145.6	243.1	4 830.0	5.5	5.0	57.5
July	2 522.5	2 081.6	4 604.0	145.2	240.1	4 844.1	5.4	5.0	57.6
August	2 533.6	2 082.3	4 615.9	145.5	237.4	4 853.2	5.4	4.9	57.7
September	2 542.1	2 080.7	4 622.9	146.2	235.5	4 858.4	5.4	4.8	57.7
October	2 549.3	2 078.2	4 627.4	147.1	235.0	4 862.4	5.5	4.8	57.6
November	2 555.6	2 076.0	4 631.6	148.3	235.3	4 866.9	5.5	4.8	57.6
December	2 560.8	2 074.7	4 635.5	149.4	235.9	4 871.4	5.5	4.8	57.6
2007									
January	2 564.4	2 073.7	4 638.1	150.7	237.2	4 875.3	5.5	4.9	57.6
PERSONS									
January 2004	6 856.4	2 716.5	9 572.9	424.4	583.3	10 156.2	5.8	5.7	63.5
January 2005	7 050.0	2 820.0	9 870.1	380.5	532.7	10 402.8	5.1	5.1	64.1
2006									
January	7 164.2	2 879.5	10 043.7	387.6	549.1	10 592.8	5.1	5.2	64.4
February	7 179.6	2 881.4	10 061.1	384.1	546.1	10 607.2	5.1	5.1	64.4
March	7 198.0	2 887.2	10 085.2	379.6	541.1	10 626.3	5.0	5.1	64.4
April	7 220.1	2 896.3	10 116.4	375.0	535.5	10 651.8	4.9	5.0	64.5
May	7 245.3	2 907.8	10 153.1	370.9	529.7	10 682.8	4.9	5.0	64.6
June	7 271.7	2 918.2	10 189.9	367.5	524.0	10 713.9	4.8	4.9	64.8
July	7 295.7	2 926.4	10 222.1	364.9	518.9	10 741.1	4.8	4.8	64.9
August	7 315.3	2 932.5	10 247.8	363.1	514.2	10 762.0	4.7	4.8	64.9
September	7 330.1	2 937.5	10 267.6	361.1	509.4	10 777.0	4.7	4.7	64.9
October	7 343.3	2 940.8	10 284.0	359.0	504.7	10 788.8	4.7	4.7	64.9
November	7 356.6	2 943.4	10 300.0	357.6	500.5	10 800.6	4.6	4.6	64.8
December	7 369.3	2 946.0	10 315.3	356.6	496.9	10 812.2	4.6	4.6	64.8
2007									
January	7 379.8	2 948.1	10 327.9	356.1	494.5	10 822.4	4.6	4.6	64.8

LABOUR FORCE STATUS (AGED 15 YEARS & OVER): Seasonally Adjusted

	EMPLOYED			UNEMPLOYED		Labour force	UNEMPLOYMENT RATE		Participation rate
	Full time	Part time	Total	Looking for f/t work	Total		Looking for f/t work	Total	
	'000	'000	'000	'000	'000		%	%	
MALES									
January 2004	4 540.8	787.8	5 328.6	253.7	311.5	5 640.1	5.3	5.5	71.7
January 2005	4 628.4	823.9	5 452.3	228.7	283.2	5 735.5	4.7	4.9	71.8
2006									
January	4 723.2	795.0	5 518.1	236.0	303.4	5 821.5	4.8	5.2	71.9
February	4 721.4	828.1	5 549.5	239.3	304.8	5 854.3	4.8	5.2	72.2
March	4 721.0	845.4	5 566.4	228.5	292.0	5 858.4	4.6	5.0	72.2
April	4 726.9	837.3	5 564.1	218.6	283.8	5 848.0	4.4	4.9	71.9
May	4 754.3	817.3	5 571.7	225.6	279.7	5 851.3	4.5	4.8	71.9
June	4 763.7	842.2	5 605.9	222.3	280.3	5 886.2	4.5	4.8	72.2
July	4 774.9	850.8	5 625.8	222.3	280.8	5 906.6	4.4	4.8	72.4
August	4 786.2	854.2	5 640.4	218.4	278.6	5 919.0	4.4	4.7	72.5
September	4 803.7	846.8	5 650.5	215.2	278.5	5 929.0	4.3	4.7	72.5
October	4 771.1	868.3	5 639.4	207.4	264.6	5 904.0	4.2	4.5	72.0
November	4 797.5	862.3	5 659.9	211.2	268.1	5 928.0	4.2	4.5	72.2
December	4 809.9	883.6	5 693.6	208.2	258.8	5 952.4	4.1	4.3	72.4
2007									
January	4 830.5	868.2	5 698.7	204.4	255.1	5 953.8	4.1	4.3	72.3
FEMALES									
January 2004	2 322.9	1 899.3	4 222.2	165.1	267.6	4 489.9	6.6	6.0	55.2
January 2005	2 411.7	2 008.2	4 419.9	154.0	246.6	4 666.5	6.0	5.3	56.6
2006									
January	2 461.2	2 056.1	4 517.3	157.9	253.5	4 770.8	6.0	5.3	57.1
February	2 465.5	2 047.5	4 513.0	154.0	248.4	4 761.4	5.9	5.2	57.0
March	2 457.3	2 069.7	4 527.0	147.2	239.2	4 766.2	5.7	5.0	57.0
April	2 479.0	2 053.8	4 532.8	146.9	256.7	4 789.5	5.6	5.4	57.2
May	2 499.4	2 072.9	4 572.3	146.3	242.8	4 815.1	5.5	5.0	57.4
June	2 512.9	2 076.8	4 589.7	148.4	247.5	4 837.2	5.6	5.1	57.6
July	2 524.5	2 089.7	4 614.2	141.8	234.4	4 848.5	5.3	4.8	57.7
August	2 533.5	2 085.3	4 618.9	148.0	240.9	4 859.7	5.5	5.0	57.8
September	2 551.1	2 079.8	4 630.9	144.8	234.7	4 865.6	5.4	4.8	57.8
October	2 529.6	2 080.4	4 610.0	146.9	231.2	4 841.2	5.5	4.8	57.4
November	2 566.4	2 066.0	4 632.5	147.0	231.3	4 863.8	5.4	4.8	57.6
December	2 571.7	2 073.0	4 644.7	151.7	243.1	4 887.8	5.6	5.0	57.8
2007									
January	2 554.4	2 081.7	4 636.0	150.9	237.4	4 873.4	5.6	4.9	57.5
PERSONS									
January 2004	6 863.7	2 687.1	9 550.8	418.8	579.2	10 130.0	5.8	5.7	63.3
January 2005	7 040.0	2 832.1	9 872.2	382.6	529.8	10 402.0	5.2	5.1	64.1
2006									
January	7 184.3	2 851.1	10 035.4	393.9	556.9	10 592.3	5.2	5.3	64.4
February	7 186.9	2 875.6	10 062.6	393.3	553.1	10 615.7	5.2	5.2	64.5
March	7 178.3	2 915.2	10 093.4	375.6	531.2	10 624.6	5.0	5.0	64.4
April	7 205.9	2 891.1	10 096.9	365.5	540.6	10 637.5	4.8	5.1	64.4
May	7 253.7	2 890.2	10 144.0	372.0	522.4	10 666.4	4.9	4.9	64.5
June	7 276.6	2 919.1	10 195.6	370.7	527.8	10 723.4	4.8	4.9	64.8
July	7 299.4	2 940.5	10 239.9	364.1	515.2	10 755.1	4.8	4.8	64.9
August	7 319.8	2 939.5	10 259.3	366.4	519.5	10 778.8	4.8	4.8	65.0
September	7 354.9	2 926.6	10 281.4	360.0	513.2	10 794.7	4.7	4.8	65.0
October	7 300.7	2 948.7	10 249.4	354.3	495.8	10 745.2	4.6	4.6	64.6
November	7 364.0	2 928.4	10 292.3	358.1	499.4	10 791.8	4.6	4.6	64.8
December	7 381.7	2 956.7	10 338.3	359.9	501.9	10 840.2	4.6	4.6	65.0
2007									
January	7 384.8	2 949.9	10 334.8	355.3	492.5	10 827.2	4.6	4.5	64.8

LABOUR FORCE STATUS (AGED 15 YEARS & OVER): Original

	EMPLOYED			UNEMPLOYED			Civilian population aged 15 years and over	UNEMPLOYMENT RATE		Participation rate	
	Full time	Part time	Total	Looking for f/t work	Total	Labour force		Not in labour force	Looking for f/t work		Total
	'000	'000	'000	'000	'000	'000		'000	%		%
MALES											
January 2004	4 546.5	750.2	5 296.7	282.7	343.5	5 640.2	2 220.6	7 860.8	5.9	6.1	71.8
January 2005	4 630.0	784.6	5 414.6	256.5	314.0	5 728.6	2 259.2	7 987.8	5.2	5.5	71.7
2006											
January	4 720.7	757.5	5 478.1	265.2	336.1	5 814.2	2 286.0	8 100.2	5.3	5.8	71.8
February	4 745.2	795.3	5 540.5	264.5	338.9	5 879.4	2 230.5	8 109.9	5.3	5.8	72.5
March	4 721.1	855.5	5 576.6	229.7	301.7	5 878.4	2 241.0	8 119.4	4.6	5.1	72.4
April	4 714.7	856.4	5 571.1	220.5	291.5	5 862.6	2 266.4	8 129.1	4.5	5.0	72.1
May	4 742.2	823.9	5 566.2	227.5	282.9	5 849.1	2 289.8	8 138.8	4.6	4.8	71.9
June	4 736.0	865.2	5 601.3	220.1	273.2	5 874.5	2 274.0	8 148.5	4.4	4.7	72.1
July	4 777.5	855.1	5 632.6	205.5	255.6	5 888.2	2 270.4	8 158.6	4.1	4.3	72.2
August	4 733.9	855.9	5 589.8	208.7	262.7	5 852.5	2 316.1	8 168.6	4.2	4.5	71.6
September	4 832.8	841.0	5 673.9	216.1	284.8	5 958.6	2 220.0	8 178.6	4.3	4.8	72.9
October	4 761.6	893.8	5 655.4	196.6	249.7	5 905.1	2 289.4	8 194.5	4.0	4.2	72.1
November	4 781.6	848.1	5 629.7	201.1	250.0	5 879.7	2 330.5	8 210.3	4.0	4.3	71.6
December	4 876.5	886.8	5 763.4	202.1	253.8	6 017.2	2 208.9	8 226.1	4.0	4.2	73.1
2007											
January	4 824.2	827.6	5 651.8	230.3	283.4	5 935.3	2 303.5	8 238.8	4.6	4.8	72.0
FEMALES											
January 2004	2 348.2	1 813.3	4 161.5	186.1	286.8	4 448.3	3 690.7	8 139.0	7.3	6.4	54.7
January 2005	2 430.9	1 919.1	4 350.0	174.7	265.2	4 615.2	3 636.4	8 251.5	6.7	5.7	55.9
2006											
January	2 475.4	1 966.5	4 441.9	180.3	273.3	4 715.3	3 636.3	8 351.6	6.8	5.8	56.5
February	2 498.1	1 993.9	4 492.0	181.2	289.1	4 781.1	3 578.7	8 359.9	6.8	6.0	57.2
March	2 437.0	2 099.1	4 536.2	155.1	259.7	4 795.9	3 572.2	8 368.1	6.0	5.4	57.3
April	2 450.2	2 069.0	4 519.2	148.1	257.8	4 776.9	3 600.2	8 377.1	5.7	5.4	57.0
May	2 464.7	2 111.4	4 576.1	143.8	240.9	4 817.0	3 569.0	8 386.0	5.5	5.0	57.4
June	2 486.8	2 109.7	4 596.5	146.5	241.9	4 838.4	3 556.6	8 395.0	5.6	5.0	57.6
July	2 524.6	2 081.8	4 606.3	131.8	216.2	4 822.5	3 581.9	8 404.5	5.0	4.5	57.4
August	2 481.8	2 100.3	4 582.1	135.5	229.8	4 812.0	3 602.0	8 413.9	5.2	4.8	57.2
September	2 603.2	2 083.5	4 686.7	142.2	235.8	4 922.6	3 500.9	8 423.4	5.2	4.8	58.4
October	2 517.3	2 104.9	4 622.2	133.7	212.0	4 834.2	3 602.5	8 436.6	5.0	4.4	57.3
November	2 573.8	2 065.1	4 638.9	133.1	207.9	4 846.8	3 603.2	8 450.0	4.9	4.3	57.4
December	2 634.7	2 067.5	4 702.2	152.1	243.1	4 945.3	3 517.8	8 463.2	5.5	4.9	58.4
2007											
January	2 563.7	1 991.1	4 554.8	173.3	257.4	4 812.2	3 661.9	8 474.1	6.3	5.3	56.8
PERSONS											
January 2004	6 894.7	2 563.5	9 458.2	468.9	630.3	10 088.5	5 911.4	15 999.8	6.4	6.2	63.1
January 2005	7 060.9	2 703.7	9 764.6	431.2	579.2	10 343.7	5 895.6	16 239.3	5.8	5.6	63.7
2006											
January	7 196.1	2 724.0	9 920.1	445.5	609.4	10 529.5	5 922.3	16 451.8	5.8	5.8	64.0
February	7 243.3	2 789.2	10 032.5	445.7	628.1	10 660.6	5 809.2	16 469.8	5.8	5.9	64.7
March	7 158.1	2 954.6	10 112.8	384.8	561.5	10 674.2	5 813.3	16 487.5	5.1	5.3	64.7
April	7 164.9	2 925.4	10 090.3	368.6	549.3	10 639.5	5 866.6	16 506.2	4.9	5.2	64.5
May	7 206.9	2 935.3	10 142.2	371.3	523.8	10 666.1	5 858.8	16 524.9	4.9	4.9	64.5
June	7 222.8	2 975.0	10 197.8	366.6	515.1	10 712.9	5 830.7	16 543.5	4.8	4.8	64.8
July	7 302.0	2 936.9	10 239.0	337.4	471.7	10 710.7	5 852.3	16 563.0	4.4	4.4	64.7
August	7 215.7	2 956.3	10 172.0	344.2	492.5	10 664.5	5 918.1	16 582.6	4.6	4.6	64.3
September	7 436.1	2 924.5	10 360.6	358.2	520.6	10 881.2	5 720.9	16 602.1	4.6	4.8	65.5
October	7 278.9	2 998.7	10 277.6	330.3	461.7	10 739.3	5 891.9	16 631.1	4.3	4.3	64.6
November	7 355.4	2 913.2	10 268.6	334.2	457.9	10 726.5	5 933.7	16 660.2	4.3	4.3	64.4
December	7 511.2	2 954.4	10 465.6	354.3	497.0	10 962.5	5 726.7	16 689.3	4.5	4.5	65.7
2007											
January	7 387.9	2 818.7	10 206.7	403.5	540.8	10 747.4	5 965.4	16 712.8	5.2	5.0	64.3

LABOUR FORCE STATUS (AGED 15 YEARS & OVER)—New South Wales

	TREND					SEASONALLY ADJUSTED					Civilian population aged 15 years and over
	Employed full time	Total employed	Total unemployed	Unemployment rate	Participation rate	Employed full time	Total employed	Total unemployed	Unemployment rate	Participation rate	
	'000	'000	'000	%	%	'000	'000	'000	%	%	
MALES											
January 2004	1 522.6	1 774.3	98.2	5.2	70.9	1 523.0	1 774.5	97.6	5.2	70.8	2 642.3
January 2005	1 513.9	1 783.7	94.8	5.0	70.3	1 509.6	1 787.9	94.5	5.0	70.4	2 672.1
2006											
January	1 536.3	1 794.8	109.5	5.7	70.6	1 550.3	1 794.5	115.1	6.0	70.8	2 696.3
February	1 539.6	1 798.8	107.8	5.7	70.7	1 539.2	1 801.8	107.4	5.6	70.8	2 698.3
March	1 542.3	1 803.4	106.0	5.6	70.7	1 537.7	1 804.4	99.4	5.2	70.5	2 700.4
April	1 543.6	1 807.9	104.8	5.5	70.8	1 536.4	1 806.8	106.5	5.6	70.8	2 702.5
May	1 543.0	1 811.7	104.5	5.5	70.9	1 554.4	1 813.3	104.9	5.5	70.9	2 704.5
June	1 541.1	1 815.0	105.3	5.5	71.0	1 540.0	1 810.5	104.3	5.4	70.7	2 706.6
July	1 538.3	1 818.4	106.3	5.5	71.1	1 542.7	1 825.5	103.9	5.4	71.2	2 708.8
August	1 535.9	1 822.2	106.2	5.5	71.1	1 533.2	1 820.0	108.9	5.6	71.1	2 711.1
September	1 534.5	1 826.6	104.4	5.4	71.1	1 528.3	1 822.1	107.6	5.6	71.1	2 713.3
October	1 535.1	1 831.1	101.3	5.2	71.1	1 530.5	1 830.7	102.7	5.3	71.2	2 717.1
November	1 537.4	1 835.4	97.5	5.0	71.0	1 541.4	1 836.7	99.1	5.1	71.1	2 720.9
December	1 540.5	1 839.4	93.6	4.8	71.0	1 540.4	1 846.1	87.6	4.5	71.0	2 724.8
2007											
January	1 543.5	1 842.1	89.9	4.7	70.9	1 550.0	1 839.0	88.0	4.6	70.6	2 727.7
FEMALES											
January 2004	798.4	1 404.5	84.1	5.7	54.5	805.4	1 396.1	84.4	5.7	54.2	2 730.9
January 2005	808.2	1 431.5	82.7	5.5	54.9	806.9	1 436.6	78.8	5.2	55.0	2 757.0
2006											
January	820.9	1 462.0	77.5	5.0	55.4	822.3	1 469.2	81.9	5.3	55.8	2 780.9
February	821.6	1 460.8	78.3	5.1	55.3	823.7	1 461.7	73.5	4.8	55.2	2 782.9
March	821.5	1 460.2	78.9	5.1	55.3	813.9	1 456.0	75.4	4.9	55.0	2 784.8
April	821.2	1 460.5	79.8	5.2	55.3	819.7	1 439.6	88.2	5.8	54.8	2 787.0
May	821.5	1 462.2	80.7	5.2	55.3	826.3	1 480.8	75.4	4.8	55.8	2 789.2
June	823.2	1 464.8	81.1	5.2	55.4	826.8	1 472.5	85.5	5.5	55.8	2 791.4
July	826.3	1 468.1	81.0	5.2	55.4	819.3	1 460.4	72.8	4.7	54.9	2 793.9
August	830.0	1 471.7	80.7	5.2	55.5	828.4	1 467.4	89.5	5.7	55.7	2 796.4
September	833.8	1 475.1	80.5	5.2	55.6	833.9	1 476.6	82.7	5.3	55.7	2 798.9
October	837.1	1 478.5	81.0	5.2	55.7	840.5	1 477.7	72.0	4.6	55.3	2 802.1
November	839.8	1 482.2	81.8	5.2	55.8	843.5	1 482.7	81.1	5.2	55.7	2 805.5
December	841.6	1 485.5	82.8	5.3	55.9	843.3	1 495.8	86.7	5.5	56.3	2 808.7
2007											
January	842.8	1 488.2	84.4	5.4	56.0	835.6	1 479.5	86.1	5.5	55.7	2 811.4
PERSONS											
January 2004	2 321.0	3 178.8	182.4	5.4	62.6	2 328.5	3 170.5	182.0	5.4	62.4	5 373.2
January 2005	2 322.1	3 215.2	177.4	5.2	62.5	2 316.4	3 224.5	173.3	5.1	62.6	5 429.1
2006											
January	2 357.2	3 256.7	187.0	5.4	62.9	2 372.6	3 263.6	197.0	5.7	63.2	5 477.2
February	2 361.2	3 259.6	186.0	5.4	62.9	2 362.9	3 263.5	180.9	5.3	62.8	5 481.2
March	2 363.8	3 263.6	184.9	5.4	62.9	2 351.5	3 260.4	174.8	5.1	62.6	5 485.1
April	2 364.8	3 268.3	184.6	5.3	62.9	2 356.1	3 246.4	194.7	5.7	62.7	5 489.4
May	2 364.6	3 273.9	185.2	5.4	63.0	2 380.6	3 294.2	180.3	5.2	63.2	5 493.7
June	2 364.3	3 279.8	186.4	5.4	63.0	2 366.8	3 283.0	189.8	5.5	63.2	5 498.0
July	2 364.6	3 286.5	187.3	5.4	63.1	2 362.0	3 285.9	176.7	5.1	62.9	5 502.7
August	2 365.9	3 293.9	186.9	5.4	63.2	2 361.6	3 287.4	198.3	5.7	63.3	5 507.4
September	2 368.3	3 301.7	184.9	5.3	63.2	2 362.2	3 298.7	190.2	5.5	63.3	5 512.2
October	2 372.2	3 309.6	182.3	5.2	63.3	2 371.1	3 308.5	174.6	5.0	63.1	5 519.3
November	2 377.2	3 317.7	179.3	5.1	63.3	2 384.9	3 319.4	180.2	5.1	63.3	5 526.4
December	2 382.1	3 324.9	176.4	5.0	63.3	2 383.7	3 341.8	174.4	5.0	63.5	5 533.5
2007											
January	2 386.3	3 330.3	174.3	5.0	63.3	2 385.6	3 318.5	174.1	5.0	63.1	5 539.1

LABOUR FORCE STATUS (AGED 15 YEARS & OVER)—Victoria

	TREND					SEASONALLY ADJUSTED					Civilian population aged 15 years and over
	Employed full time	Total employed	Total unemployed	Unemployment rate	Participation rate	Employed full time	Total employed	Total unemployed	Unemployment rate	Participation rate	
	'000	'000	'000	%	%	'000	'000	'000	%	%	
MALES											
January 2004	1 117.5	1 320.4	75.3	5.4	71.7	1 115.5	1 318.6	81.1	5.8	71.9	1 945.5
January 2005	1 147.7	1 353.2	78.1	5.5	72.4	1 152.3	1 355.6	77.4	5.4	72.5	1 976.1
2006											
January	1 157.1	1 365.4	74.2	5.2	71.9	1 149.3	1 361.0	70.1	4.9	71.5	2 002.9
February	1 156.7	1 368.2	73.5	5.1	71.9	1 156.3	1 371.8	75.4	5.2	72.2	2 005.0
March	1 158.1	1 372.6	72.7	5.0	72.0	1 161.8	1 372.6	75.3	5.2	72.1	2 007.1
April	1 161.5	1 378.2	72.1	5.0	72.2	1 161.6	1 380.4	70.7	4.9	72.2	2 009.3
May	1 166.9	1 384.7	71.5	4.9	72.4	1 165.8	1 379.6	69.2	4.8	72.0	2 011.5
June	1 172.8	1 391.0	70.7	4.8	72.6	1 169.1	1 394.1	70.2	4.8	72.7	2 013.8
July	1 178.0	1 396.1	69.8	4.8	72.7	1 179.0	1 393.3	74.4	5.1	72.8	2 016.2
August	1 181.5	1 399.5	69.0	4.7	72.7	1 180.2	1 401.9	67.2	4.6	72.8	2 018.6
September	1 183.1	1 401.3	68.7	4.7	72.7	1 198.0	1 410.3	67.0	4.5	73.1	2 021.0
October	1 183.0	1 401.9	68.4	4.7	72.6	1 178.3	1 399.4	69.1	4.7	72.5	2 024.9
November	1 181.9	1 402.0	68.3	4.6	72.5	1 176.4	1 394.5	66.0	4.5	72.0	2 028.6
December	1 180.6	1 401.9	68.4	4.7	72.4	1 180.9	1 403.5	71.5	4.8	72.6	2 032.5
2007											
January	1 178.9	1 402.1	68.6	4.7	72.3	1 178.6	1 403.9	68.6	4.7	72.3	2 035.8
FEMALES											
January 2004	572.0	1 055.7	65.6	5.9	54.9	573.9	1 053.5	61.4	5.5	54.6	2 043.6
January 2005	591.1	1 106.7	66.3	5.7	56.6	587.3	1 108.7	65.0	5.5	56.7	2 071.5
2006											
January	599.8	1 124.7	67.1	5.6	56.9	599.6	1 121.6	70.4	5.9	56.9	2 095.9
February	601.1	1 126.8	66.7	5.6	56.9	606.9	1 129.7	66.1	5.5	57.0	2 097.8
March	602.1	1 129.2	66.4	5.6	56.9	601.3	1 129.5	62.5	5.2	56.8	2 099.8
April	603.5	1 132.1	65.8	5.5	57.0	604.9	1 130.3	69.5	5.8	57.1	2 102.1
May	605.1	1 135.9	64.3	5.4	57.0	599.9	1 133.5	63.7	5.3	56.9	2 104.4
June	606.9	1 139.7	62.3	5.2	57.1	607.6	1 137.4	64.5	5.4	57.1	2 106.7
July	608.6	1 142.7	60.1	5.0	57.0	607.9	1 146.7	61.6	5.1	57.3	2 109.0
August	610.6	1 144.6	58.6	4.9	57.0	611.5	1 147.8	55.5	4.6	57.0	2 111.3
September	612.7	1 145.2	58.0	4.8	56.9	624.4	1 146.2	54.3	4.5	56.8	2 113.6
October	615.0	1 145.0	58.6	4.9	56.8	601.3	1 144.4	59.1	4.9	56.9	2 116.9
November	617.6	1 144.7	59.8	5.0	56.8	616.4	1 140.6	60.8	5.1	56.7	2 120.2
December	620.4	1 144.6	61.2	5.1	56.8	621.5	1 142.6	62.3	5.2	56.7	2 123.6
2007											
January	623.3	1 144.5	62.8	5.2	56.8	630.0	1 149.2	64.4	5.3	57.1	2 126.4
PERSONS											
January 2004	1 689.5	2 376.0	140.9	5.6	63.1	1 689.4	2 372.1	142.5	5.7	63.0	3 989.0
January 2005	1 738.8	2 459.9	144.4	5.5	64.3	1 739.6	2 464.3	142.3	5.5	64.4	4 047.5
2006											
January	1 756.9	2 490.1	141.3	5.4	64.2	1 749.0	2 482.6	140.5	5.4	64.0	4 098.8
February	1 757.8	2 495.0	140.1	5.3	64.2	1 763.2	2 501.5	141.5	5.4	64.4	4 102.8
March	1 760.2	2 501.8	139.2	5.3	64.3	1 763.1	2 502.1	137.8	5.2	64.3	4 106.9
April	1 765.0	2 510.3	137.9	5.2	64.4	1 766.4	2 510.8	140.2	5.3	64.5	4 111.4
May	1 772.1	2 520.6	135.8	5.1	64.5	1 765.8	2 513.1	132.9	5.0	64.3	4 115.9
June	1 779.7	2 530.6	132.9	5.0	64.6	1 776.7	2 531.5	134.7	5.1	64.7	4 120.5
July	1 786.6	2 538.8	129.9	4.9	64.7	1 786.9	2 539.9	136.0	5.1	64.9	4 125.2
August	1 792.1	2 544.1	127.6	4.8	64.7	1 791.7	2 549.7	122.7	4.6	64.7	4 129.9
September	1 795.9	2 546.5	126.6	4.7	64.6	1 822.4	2 556.5	121.2	4.5	64.8	4 134.6
October	1 798.0	2 546.9	127.0	4.7	64.5	1 779.6	2 543.8	128.2	4.8	64.5	4 141.8
November	1 799.5	2 546.7	128.1	4.8	64.5	1 792.8	2 535.1	126.8	4.8	64.2	4 148.9
December	1 801.0	2 546.6	129.7	4.8	64.4	1 802.4	2 546.1	133.8	5.0	64.5	4 156.0
2007											
January	1 802.2	2 546.6	131.4	4.9	64.4	1 808.6	2 553.1	133.0	4.9	64.5	4 162.2

	TREND					SEASONALLY ADJUSTED					Civilian population aged 15 years and over
	Employed full time	Total employed	Total unemployed	Unemployment rate	Participation rate	Employed full time	Total employed	Total unemployed	Unemployment rate	Participation rate	
	'000	'000	'000	%	%	'000	'000	'000	%	%	
MALES											
January 2004	880.5	1 023.7	62.8	5.8	72.5	883.8	1 023.6	60.3	5.6	72.3	1 499.3
January 2005	917.2	1 075.2	48.4	4.3	73.0	915.5	1 076.0	49.9	4.4	73.1	1 539.5
2006											
January	943.5	1 099.1	54.6	4.7	73.2	943.5	1 097.0	57.1	4.9	73.2	1 575.6
February	943.5	1 100.4	54.2	4.7	73.1	944.2	1 101.1	55.6	4.8	73.3	1 579.0
March	944.8	1 103.0	52.9	4.6	73.1	943.8	1 105.2	54.4	4.7	73.3	1 582.1
April	947.7	1 106.8	51.1	4.4	73.0	943.1	1 104.4	46.8	4.1	72.6	1 585.1
May	951.8	1 111.1	49.4	4.3	73.1	953.0	1 107.2	51.5	4.4	73.0	1 588.3
June	956.2	1 115.4	48.3	4.2	73.1	962.6	1 120.4	47.3	4.1	73.4	1 591.3
July	960.5	1 119.4	47.8	4.1	73.2	956.1	1 121.3	46.0	3.9	73.2	1 594.2
August	964.9	1 123.8	47.6	4.1	73.3	966.6	1 125.5	45.9	3.9	73.3	1 597.2
September	969.6	1 129.3	47.2	4.0	73.5	971.9	1 126.6	55.2	4.7	73.9	1 600.1
October	974.8	1 135.9	46.4	3.9	73.7	969.9	1 130.5	41.1	3.5	73.0	1 604.7
November	980.7	1 143.5	45.5	3.8	73.9	978.1	1 140.5	47.6	4.0	73.8	1 609.3
December	986.6	1 151.2	44.6	3.7	74.1	988.7	1 155.1	42.2	3.5	74.2	1 613.9
2007											
January	992.2	1 158.6	43.7	3.6	74.4	998.8	1 168.3	44.0	3.6	75.0	1 617.3
FEMALES											
January 2004	445.2	825.4	59.8	6.8	57.4	449.6	823.9	60.6	6.8	57.4	1 542.0
January 2005	491.5	882.7	47.3	5.1	58.9	490.3	881.7	49.0	5.3	59.0	1 577.8
2006											
January	485.6	897.2	52.4	5.5	59.0	488.8	896.0	53.5	5.6	59.0	1 608.8
February	489.7	900.0	52.7	5.5	59.1	493.5	897.8	55.5	5.8	59.2	1 611.4
March	495.5	904.2	52.8	5.5	59.3	487.1	909.7	51.8	5.4	59.6	1 614.1
April	502.5	910.2	52.7	5.5	59.6	503.5	907.6	51.4	5.4	59.3	1 616.6
May	509.9	917.8	52.4	5.4	59.9	512.0	917.8	53.3	5.5	60.0	1 619.1
June	517.0	926.2	51.8	5.3	60.3	518.5	920.6	50.9	5.2	59.9	1 621.6
July	523.5	934.1	50.8	5.2	60.6	522.6	934.8	51.2	5.2	60.7	1 624.3
August	528.3	940.2	49.7	5.0	60.8	528.9	943.0	51.4	5.2	61.1	1 627.0
September	531.1	944.0	48.3	4.9	60.9	534.7	956.6	48.8	4.9	61.7	1 629.7
October	532.6	945.9	46.9	4.7	60.8	529.5	941.1	44.8	4.5	60.4	1 633.4
November	533.5	946.8	45.8	4.6	60.6	535.7	942.3	44.5	4.5	60.3	1 637.2
December	533.7	947.3	44.9	4.5	60.5	536.8	944.5	46.2	4.7	60.4	1 640.9
2007											
January	533.3	947.1	44.2	4.5	60.4	527.2	950.2	44.7	4.5	60.5	1 643.9
PERSONS											
January 2004	1 325.6	1 849.2	122.6	6.2	64.8	1 333.4	1 847.5	120.9	6.1	64.7	3 041.3
January 2005	1 408.7	1 957.9	95.7	4.7	65.9	1 405.8	1 957.6	98.9	4.8	66.0	3 117.4
2006											
January	1 429.0	1 996.2	107.0	5.1	66.0	1 432.3	1 993.0	110.6	5.3	66.1	3 184.4
February	1 433.2	2 000.4	106.9	5.1	66.1	1 437.7	1 998.9	111.1	5.3	66.1	3 190.4
March	1 440.3	2 007.3	105.7	5.0	66.1	1 430.9	2 014.9	106.2	5.0	66.4	3 196.2
April	1 450.2	2 017.0	103.9	4.9	66.2	1 446.6	2 012.0	98.2	4.7	65.9	3 201.7
May	1 461.7	2 029.0	101.9	4.8	66.4	1 465.0	2 025.0	104.8	4.9	66.4	3 207.4
June	1 473.3	2 041.6	100.1	4.7	66.7	1 481.1	2 041.0	98.2	4.6	66.6	3 212.9
July	1 484.0	2 053.4	98.7	4.6	66.9	1 478.8	2 056.0	97.2	4.5	66.9	3 218.6
August	1 493.2	2 063.9	97.3	4.5	67.0	1 495.5	2 068.5	97.3	4.5	67.2	3 224.2
September	1 500.7	2 073.3	95.5	4.4	67.1	1 506.6	2 083.2	104.0	4.8	67.7	3 229.8
October	1 507.5	2 081.8	93.3	4.3	67.2	1 499.4	2 071.6	85.9	4.0	66.6	3 238.1
November	1 514.2	2 090.3	91.2	4.2	67.2	1 513.9	2 082.8	92.1	4.2	67.0	3 246.5
December	1 520.3	2 098.6	89.5	4.1	67.3	1 525.5	2 099.7	88.4	4.0	67.2	3 254.8
2007											
January	1 525.5	2 105.8	87.9	4.0	67.3	1 526.0	2 118.5	88.6	4.0	67.7	3 261.2

	TREND					SEASONALLY ADJUSTED					Civilian population aged 15 years and over
	Employed full time	Total employed	Total unemployed	Unemployment rate	Participation rate	Employed full time	Total employed	Total unemployed	Unemployment rate	Participation rate	
	'000	'000	'000	%	%	'000	'000	'000	%	%	
MALES											
January 2004	334.6	396.6	28.0	6.6	69.6	333.5	398.3	27.0	6.4	69.8	609.7
January 2005	340.2	402.8	23.7	5.6	69.3	336.5	399.1	26.0	6.1	69.1	615.1
2006											
January	341.8	405.3	23.2	5.4	69.1	342.6	402.9	23.3	5.5	68.7	620.6
February	341.3	405.6	23.6	5.5	69.1	341.0	409.8	22.6	5.2	69.6	621.1
March	340.8	405.9	23.8	5.5	69.1	339.7	405.3	26.4	6.1	69.4	621.6
April	340.7	406.5	23.7	5.5	69.2	341.4	404.6	24.5	5.7	69.0	622.1
May	341.5	407.7	23.0	5.3	69.2	340.8	407.1	22.8	5.3	69.1	622.6
June	343.4	409.4	21.8	5.0	69.2	341.9	408.7	20.5	4.8	68.9	623.1
July	345.8	411.2	20.6	4.8	69.3	344.9	411.7	20.8	4.8	69.4	623.5
August	347.6	412.6	20.0	4.6	69.3	345.4	413.1	20.5	4.7	69.5	623.8
September	348.1	413.1	20.2	4.7	69.4	356.0	413.7	19.9	4.6	69.5	624.2
October	347.3	412.6	21.2	4.9	69.4	349.0	416.9	17.8	4.1	69.6	625.0
November	345.6	411.5	22.4	5.2	69.3	344.2	408.8	23.6	5.5	69.1	625.8
December	343.7	410.2	23.8	5.5	69.3	339.6	409.3	24.7	5.7	69.3	626.5
2007											
January	341.6	408.8	25.1	5.8	69.2	340.4	407.1	27.0	6.2	69.2	627.1
FEMALES											
January 2004	154.8	319.1	22.2	6.5	53.8	152.7	317.7	23.6	6.9	53.8	634.0
January 2005	166.6	329.3	17.3	5.0	54.3	168.3	330.1	18.0	5.2	54.5	638.1
2006											
January	172.0	338.3	17.0	4.8	55.3	175.2	340.0	15.5	4.3	55.3	642.5
February	172.7	338.5	17.2	4.8	55.3	172.2	338.0	18.2	5.1	55.4	642.9
March	173.1	338.5	17.4	4.9	55.3	173.1	336.4	16.7	4.7	54.9	643.3
April	173.3	338.7	17.4	4.9	55.3	171.9	340.0	18.0	5.0	55.6	643.8
May	173.3	338.9	17.5	4.9	55.3	172.8	338.3	17.6	4.9	55.2	644.3
June	173.4	339.6	17.6	4.9	55.4	174.5	340.9	16.6	4.6	55.4	644.7
July	173.6	340.8	17.9	5.0	55.6	173.3	340.7	18.6	5.2	55.7	645.2
August	173.7	342.6	18.1	5.0	55.9	175.9	340.9	18.0	5.0	55.6	645.6
September	173.9	344.5	18.5	5.1	56.2	172.2	343.4	18.4	5.1	56.0	646.1
October	174.2	346.4	18.8	5.2	56.5	171.4	345.4	18.9	5.2	56.3	646.8
November	174.4	348.0	19.1	5.2	56.7	176.5	353.5	18.8	5.0	57.5	647.6
December	174.7	349.1	19.3	5.2	56.8	176.7	349.6	20.3	5.5	57.1	648.4
2007											
January	175.0	349.9	19.4	5.2	56.9	173.6	346.2	18.7	5.1	56.2	649.0
PERSONS											
January 2004	489.3	715.7	50.2	6.6	61.6	486.2	716.0	50.6	6.6	61.6	1 243.7
January 2005	506.8	732.1	41.0	5.3	61.7	504.9	729.2	43.9	5.7	61.7	1 253.2
2006											
January	513.8	743.6	40.3	5.1	62.1	517.8	742.9	38.7	5.0	61.9	1 263.1
February	514.1	744.1	40.8	5.2	62.1	513.3	747.8	40.8	5.2	62.4	1 264.0
March	513.9	744.5	41.2	5.2	62.1	512.8	741.6	43.1	5.5	62.0	1 264.9
April	514.0	745.2	41.1	5.2	62.1	513.3	744.6	42.5	5.4	62.2	1 265.9
May	514.8	746.6	40.4	5.1	62.1	513.6	745.4	40.4	5.1	62.0	1 266.8
June	516.8	748.9	39.4	5.0	62.2	516.3	749.6	37.1	4.7	62.1	1 267.8
July	519.4	752.1	38.4	4.9	62.3	518.1	752.4	39.4	5.0	62.4	1 268.6
August	521.3	755.2	38.1	4.8	62.5	521.4	754.0	38.6	4.9	62.4	1 269.5
September	522.0	757.6	38.7	4.9	62.7	528.2	757.1	38.3	4.8	62.6	1 270.3
October	521.4	759.0	40.0	5.0	62.8	520.4	762.3	36.7	4.6	62.8	1 271.8
November	520.1	759.5	41.5	5.2	62.9	520.7	762.4	42.3	5.3	63.2	1 273.4
December	518.4	759.4	43.1	5.4	63.0	516.3	759.0	45.1	5.6	63.1	1 274.9
2007											
January	516.6	758.7	44.5	5.5	63.0	514.0	753.4	45.8	5.7	62.6	1 276.1

	TREND					SEASONALLY ADJUSTED					Civilian population aged 15 years and over
	Employed full time	Total employed	Total unemployed	Unemployment rate	Participation rate	Employed full time	Total employed	Total unemployed	Unemployment rate	Participation rate	
	'000	'000	'000	%	%	'000	'000	'000	%	%	
MALES											
January 2004	469.9	551.6	30.9	5.3	74.8	466.7	550.8	31.3	5.4	74.7	779.2
January 2005	489.8	571.4	24.8	4.2	75.0	492.5	571.5	23.9	4.0	74.9	795.2
2006											
January	509.4	594.9	23.5	3.8	76.3	507.2	592.4	24.0	3.9	76.1	810.0
February	511.3	596.2	23.1	3.7	76.3	513.5	595.1	24.1	3.9	76.3	811.3
March	513.1	597.4	22.3	3.6	76.3	516.5	603.1	21.8	3.5	76.9	812.7
April	514.8	598.5	21.1	3.4	76.1	513.9	598.2	21.6	3.5	76.1	814.1
May	516.7	599.6	19.9	3.2	76.0	513.0	596.6	19.0	3.1	75.5	815.4
June	518.9	600.8	19.0	3.1	75.9	516.3	598.2	19.8	3.2	75.7	816.8
July	520.9	602.0	18.3	3.0	75.8	524.6	604.0	17.2	2.8	75.9	818.4
August	522.4	603.0	18.0	2.9	75.7	524.4	604.0	18.2	2.9	75.9	820.0
September	523.2	603.8	18.0	2.9	75.7	523.4	605.3	18.3	2.9	75.9	821.6
October	523.4	604.1	18.2	2.9	75.5	524.2	604.0	18.3	2.9	75.6	823.7
November	523.3	604.0	18.4	3.0	75.4	521.0	603.0	17.8	2.9	75.2	825.8
December	523.2	603.9	18.6	3.0	75.2	521.1	602.1	19.2	3.1	75.0	827.9
2007											
January	523.0	603.7	18.9	3.0	75.1	526.0	605.4	19.0	3.0	75.3	829.7
FEMALES											
January 2004	216.5	422.7	28.5	6.3	57.1	216.7	422.1	27.2	6.1	56.8	790.8
January 2005	231.4	446.7	24.3	5.2	58.5	230.9	443.1	25.8	5.5	58.2	805.6
2006											
January	238.1	463.9	21.8	4.5	59.4	246.1	467.2	20.5	4.2	59.6	818.0
February	238.8	464.4	21.7	4.5	59.4	240.5	462.6	22.1	4.6	59.2	818.9
March	239.3	465.4	21.3	4.4	59.4	237.9	464.3	22.9	4.7	59.4	819.9
April	239.9	466.7	20.6	4.2	59.4	235.5	465.9	20.4	4.2	59.2	820.9
May	240.6	468.0	20.1	4.1	59.4	237.8	467.7	19.6	4.0	59.3	822.0
June	241.3	469.1	19.9	4.1	59.4	240.9	469.7	20.1	4.1	59.5	823.1
July	242.1	469.6	20.0	4.1	59.4	253.3	473.3	17.2	3.5	59.5	824.3
August	242.8	469.8	20.2	4.1	59.3	239.7	468.9	21.6	4.4	59.4	825.6
September	243.2	470.1	20.1	4.1	59.3	242.2	471.8	20.4	4.1	59.5	826.8
October	243.8	471.1	19.5	4.0	59.2	235.0	463.3	23.0	4.7	58.7	828.5
November	244.9	472.8	18.5	3.8	59.2	249.3	474.5	17.1	3.5	59.2	830.2
December	246.2	474.7	17.4	3.5	59.2	251.0	475.8	15.9	3.2	59.1	831.8
2007											
January	247.2	476.7	16.3	3.3	59.2	246.7	481.0	15.1	3.0	59.5	833.3
PERSONS											
January 2004	686.4	974.3	59.4	5.7	65.8	683.4	972.9	58.5	5.7	65.7	1 570.0
January 2005	721.2	1 018.1	49.1	4.6	66.7	723.4	1 014.6	49.7	4.7	66.5	1 600.9
2006											
January	747.5	1 058.8	45.4	4.1	67.8	753.3	1 059.6	44.5	4.0	67.8	1 628.0
February	750.0	1 060.6	44.9	4.1	67.8	754.0	1 057.8	46.1	4.2	67.7	1 630.3
March	752.4	1 062.8	43.6	3.9	67.8	754.4	1 067.4	44.7	4.0	68.1	1 632.5
April	754.8	1 065.2	41.8	3.8	67.7	749.4	1 064.1	42.0	3.8	67.7	1 635.0
May	757.3	1 067.6	40.1	3.6	67.6	750.8	1 064.3	38.5	3.5	67.4	1 637.4
June	760.2	1 069.9	38.9	3.5	67.6	757.2	1 067.9	39.8	3.6	67.5	1 639.9
July	763.0	1 071.6	38.4	3.5	67.6	777.9	1 077.3	34.4	3.1	67.7	1 642.8
August	765.2	1 072.8	38.2	3.4	67.5	764.1	1 072.9	39.7	3.6	67.6	1 645.6
September	766.5	1 073.9	38.1	3.4	67.4	765.7	1 077.1	38.7	3.5	67.7	1 648.5
October	767.2	1 075.2	37.7	3.4	67.3	759.2	1 067.3	41.3	3.7	67.1	1 652.2
November	768.2	1 076.8	36.9	3.3	67.3	770.3	1 077.4	34.8	3.1	67.2	1 656.0
December	769.4	1 078.7	35.9	3.2	67.2	772.1	1 077.8	35.1	3.2	67.1	1 659.7
2007											
January	770.2	1 080.4	35.2	3.2	67.1	772.7	1 086.4	34.1	3.0	67.4	1 663.0

	TREND					SEASONALLY ADJUSTED					Civilian population aged 15 years and over
	Employed full time	Total employed	Total unemployed	Unemployment rate	Participation rate	Employed full time	Total employed	Total unemployed	Unemployment rate	Participation rate	
	'000	'000	'000	%	%	'000	'000	'000	%	%	
MALES											
January 2004	98.5	115.3	9.5	7.7	66.8	99.7	115.5	9.6	7.7	66.9	186.9
January 2005	98.6	117.5	7.4	5.9	65.8	97.9	116.5	6.8	5.5	65.0	189.6
2006											
January	102.1	123.0	9.0	6.9	69.0	101.6	123.7	9.6	7.2	69.7	191.2
February	102.1	122.7	9.1	6.9	68.9	101.8	121.9	9.2	7.0	68.5	191.3
March	101.9	122.3	9.2	7.0	68.7	101.8	120.7	8.6	6.6	67.6	191.4
April	101.5	121.8	9.3	7.1	68.5	101.5	122.6	9.0	6.8	68.7	191.5
May	101.2	121.3	9.4	7.2	68.2	101.7	122.0	9.9	7.5	68.9	191.6
June	100.9	120.9	9.4	7.2	68.0	101.0	120.9	9.7	7.4	68.1	191.7
July	100.5	120.4	9.3	7.2	67.6	99.9	119.9	9.9	7.6	67.7	191.8
August	100.3	119.9	9.2	7.1	67.2	99.9	119.8	8.1	6.4	66.6	192.0
September	100.2	119.6	8.9	6.9	66.9	100.5	119.8	9.1	7.0	67.1	192.1
October	100.2	119.6	8.6	6.7	66.7	101.2	119.8	8.6	6.7	66.8	192.3
November	100.4	119.8	8.3	6.5	66.5	98.8	118.2	8.7	6.9	65.9	192.6
December	100.7	120.0	8.0	6.3	66.4	100.5	120.8	8.2	6.3	66.9	192.8
2007											
January	100.9	120.3	7.8	6.1	66.4	102.1	121.2	7.1	5.5	66.5	192.9
FEMALES											
January 2004	46.6	95.1	6.2	6.1	51.6	47.2	95.2	5.8	5.8	51.5	196.2
January 2005	48.6	98.8	5.8	5.6	52.6	49.5	98.8	6.0	5.7	52.7	198.7
2006											
January	48.2	101.3	6.8	6.3	54.0	48.2	101.9	6.6	6.1	54.2	200.1
February	48.6	101.5	6.5	6.0	54.0	48.4	101.3	6.6	6.1	53.9	200.2
March	49.3	102.0	6.3	5.8	54.1	49.8	102.4	6.7	6.1	54.4	200.3
April	50.3	102.6	6.2	5.7	54.3	48.9	100.6	6.3	5.9	53.3	200.5
May	51.2	103.3	6.1	5.5	54.5	50.9	103.0	6.2	5.7	54.5	200.6
June	52.1	103.8	6.0	5.4	54.7	54.2	104.9	6.1	5.5	55.3	200.7
July	52.8	104.1	5.9	5.4	54.8	52.8	106.5	4.6	4.1	55.3	200.9
August	53.2	104.0	6.0	5.5	54.7	53.0	103.4	6.3	5.7	54.6	201.1
September	53.4	103.7	6.1	5.6	54.6	52.6	101.8	6.9	6.4	54.0	201.2
October	53.4	103.3	6.2	5.7	54.4	53.7	103.8	6.6	6.0	54.8	201.4
November	53.4	103.1	6.2	5.7	54.2	54.1	103.5	5.4	4.9	54.0	201.6
December	53.4	103.0	6.3	5.7	54.1	53.0	102.7	6.2	5.7	54.0	201.8
2007											
January	53.4	102.9	6.3	5.8	54.1	53.2	103.4	6.5	5.9	54.4	201.9
PERSONS											
January 2004	145.1	210.4	15.7	7.0	59.0	146.9	210.6	15.4	6.8	59.0	383.0
January 2005	147.2	216.3	13.2	5.7	59.1	147.5	215.3	12.8	5.6	58.7	388.3
2006											
January	150.3	224.2	15.8	6.6	61.3	149.8	225.6	16.2	6.7	61.8	391.3
February	150.7	224.2	15.7	6.5	61.3	150.2	223.2	15.8	6.6	61.0	391.5
March	151.2	224.2	15.5	6.5	61.2	151.7	223.1	15.2	6.4	60.9	391.7
April	151.8	224.4	15.5	6.5	61.2	150.4	223.2	15.2	6.4	60.8	391.9
May	152.4	224.6	15.5	6.4	61.2	152.6	225.1	16.1	6.7	61.5	392.2
June	153.0	224.7	15.4	6.4	61.2	155.1	225.8	15.8	6.5	61.6	392.4
July	153.3	224.5	15.3	6.4	61.1	152.6	226.4	14.5	6.0	61.3	392.7
August	153.5	224.0	15.2	6.3	60.8	152.8	223.2	14.4	6.1	60.5	393.1
September	153.5	223.3	15.0	6.3	60.6	153.1	221.6	16.0	6.7	60.4	393.4
October	153.6	222.9	14.8	6.2	60.4	155.0	223.6	15.2	6.4	60.6	393.8
November	153.8	222.9	14.6	6.1	60.2	152.9	221.7	14.1	6.0	59.8	394.2
December	154.0	223.0	14.3	6.0	60.2	153.5	223.5	14.4	6.0	60.3	394.6
2007											
January	154.4	223.3	14.1	5.9	60.1	155.3	224.6	13.6	5.7	60.3	394.8

	TREND					Civilian population aged 15 years and over '000
	Employed full time	Total employed	Total unemployed	Unemployment rate	Participation rate	
	'000	'000	'000	%	%	
MALES						
January 2004	43.5	53.8	2.4	4.2	76.2	73.7
January 2005	43.7	51.3	3.8	6.9	73.5	74.9
2006						
January	45.1	53.1	3.8	6.7	74.0	76.9
February	45.2	53.1	3.8	6.7	73.8	77.2
March	45.4	53.2	3.7	6.4	73.5	77.4
April	45.7	53.6	3.4	6.0	73.4	77.6
May	46.2	54.0	3.2	5.6	73.4	77.9
June	46.8	54.4	3.0	5.2	73.6	78.1
July	47.4	54.8	2.9	5.0	73.7	78.3
August	47.8	55.1	2.7	4.7	73.7	78.5
September	48.0	55.4	2.5	4.3	73.6	78.6
October	48.3	55.7	2.2	3.8	73.3	78.9
November	48.5	56.0	1.8	3.2	73.1	79.2
December	48.7	56.3	1.5	2.6	72.8	79.4
2007						
January	48.8	56.5	1.2	2.1	72.6	79.6
FEMALES						
January 2004	29.1	43.8	2.2	4.9	66.2	69.5
January 2005	29.6	43.5	2.2	4.8	65.0	70.2
2006						
January	31.2	44.4	2.9	6.0	65.7	72.0
February	31.6	44.8	2.9	6.1	66.1	72.1
March	32.0	45.2	2.9	6.0	66.6	72.2
April	32.4	45.8	2.8	5.7	67.2	72.3
May	32.8	46.5	2.5	5.1	67.7	72.4
June	33.3	47.1	2.2	4.4	68.0	72.5
July	33.7	47.4	1.8	3.6	67.8	72.5
August	34.0	47.3	1.4	2.8	67.1	72.6
September	34.0	46.9	1.1	2.3	66.1	72.6
October	34.0	46.4	0.9	2.0	65.1	72.8
November	33.8	45.9	0.9	1.8	64.2	72.9
December	33.6	45.5	0.8	1.8	63.4	73.0
2007						
January	33.5	45.1	0.8	1.7	62.9	73.1
PERSONS						
January 2004	72.7	97.5	4.6	4.5	71.3	143.2
January 2005	73.3	94.8	6.0	5.9	69.4	145.2
2006						
January	76.3	97.5	6.7	6.4	70.0	148.9
February	76.7	97.9	6.7	6.4	70.1	149.3
March	77.3	98.5	6.5	6.2	70.2	149.6
April	78.1	99.4	6.2	5.8	70.4	149.9
May	79.0	100.5	5.7	5.4	70.7	150.3
June	80.1	101.5	5.2	4.8	70.9	150.6
July	81.1	102.2	4.6	4.3	70.9	150.8
August	81.7	102.5	4.1	3.9	70.5	151.0
September	82.1	102.3	3.6	3.4	70.0	151.3
October	82.2	102.1	3.1	3.0	69.4	151.7
November	82.3	101.9	2.7	2.6	68.8	152.0
December	82.3	101.7	2.3	2.2	68.3	152.4
2007						
January	82.3	101.7	2.0	2.0	68.0	152.7

	TREND					Civilian population aged 15 years and over
	Employed full time	Total employed	Total unemployed	Unemployment rate	Participation rate	
	'000	'000	'000	%	%	
MALES						
January 2004	75.5	92.3	3.9	4.1	77.5	124.2
January 2005	79.7	93.4	4.1	4.2	77.9	125.2
2006						
January	79.6	95.1	3.1	3.2	77.6	126.6
February	79.9	95.3	3.3	3.3	77.8	126.7
March	80.3	95.4	3.5	3.5	78.0	126.8
April	80.7	95.4	3.6	3.6	78.0	126.9
May	81.1	95.5	3.6	3.6	78.0	127.0
June	81.6	95.7	3.4	3.5	78.0	127.1
July	82.1	96.1	3.2	3.3	78.1	127.3
August	82.6	96.6	3.1	3.1	78.2	127.4
September	83.0	97.0	3.0	3.0	78.3	127.6
October	83.3	97.2	3.0	3.0	78.4	127.8
November	83.5	97.4	3.1	3.1	78.5	128.1
December	83.7	97.4	3.2	3.2	78.5	128.3
2007						
January	83.8	97.5	3.3	3.3	78.4	128.6
FEMALES						
January 2004	53.3	84.7	3.1	3.5	66.4	132.1
January 2005	54.2	88.0	2.6	2.8	68.3	132.5
2006						
January	54.6	85.7	3.0	3.4	66.5	133.4
February	55.5	86.4	2.8	3.2	66.8	133.6
March	56.6	87.3	2.6	2.9	67.2	133.7
April	57.7	88.5	2.5	2.7	67.9	133.9
May	58.9	89.8	2.3	2.5	68.7	134.0
June	60.0	91.1	2.2	2.4	69.6	134.2
July	60.7	92.2	2.2	2.4	70.3	134.3
August	60.9	92.7	2.3	2.5	70.7	134.4
September	60.7	92.7	2.5	2.6	70.7	134.5
October	60.3	92.3	2.7	2.8	70.5	134.7
November	59.7	91.8	2.8	3.0	70.2	134.9
December	59.2	91.3	3.0	3.2	69.8	135.0
2007						
January	58.7	90.7	3.1	3.3	69.4	135.2
PERSONS						
January 2004	128.9	177.0	7.0	3.8	71.8	256.3
January 2005	133.9	181.3	6.7	3.6	73.0	257.7
2006						
January	134.2	180.8	6.1	3.3	71.9	260.1
February	135.4	181.7	6.1	3.3	72.2	260.3
March	136.9	182.7	6.1	3.2	72.5	260.5
April	138.4	183.9	6.0	3.2	72.8	260.8
May	140.0	185.3	5.9	3.1	73.2	261.1
June	141.6	186.8	5.7	2.9	73.7	261.3
July	142.8	188.3	5.5	2.8	74.1	261.6
August	143.6	189.3	5.4	2.8	74.3	261.8
September	143.7	189.6	5.5	2.8	74.4	262.1
October	143.5	189.5	5.7	2.9	74.4	262.5
November	143.2	189.2	5.9	3.0	74.2	262.9
December	142.9	188.7	6.2	3.2	74.0	263.4
2007						
January	142.6	188.1	6.4	3.3	73.8	263.8

Original—January 2007

	EMPLOYED			UNEMPLOYED			Civilian population aged 15 years and over	UNEMPLOYMENT RATE		Participation rate	
	Full time	Part time	Total	Looking for f/t work	Total	Labour force		Not in labour force	Looking for f/t work		Total
	'000	'000	'000	'000	'000	'000		'000	%		%
MALES											
New South Wales	1 544.7	278.2	1 822.9	77.9	94.7	1 917.6	810.1	2 727.7	4.8	4.9	70.3
Victoria	1 182.0	209.0	1 391.0	59.0	73.3	1 464.3	571.4	2 035.8	4.8	5.0	71.9
Queensland	996.5	160.9	1 157.4	39.8	50.0	1 207.3	410.0	1 617.3	3.8	4.1	74.6
South Australia	337.4	65.3	402.7	24.8	30.4	433.1	194.1	627.1	6.8	7.0	69.1
Western Australia	529.4	75.5	604.9	18.4	22.3	627.2	202.5	829.7	3.4	3.6	75.6
Tasmania	103.0	18.6	121.7	6.1	7.1	128.8	64.2	192.9	5.6	5.5	66.7
Northern Territory	47.7	7.1	54.7	*1.4	*1.5	56.3	23.3	79.6	*2.9	*2.7	70.7
Australian Capital Territory	83.5	13.0	96.5	3.0	4.2	100.6	28.0	128.6	3.4	4.1	78.3
Australia	4 824.2	827.6	5 651.8	230.3	283.4	5 935.3	2 303.5	8 238.8	4.6	4.8	72.0
FEMALES											
New South Wales	841.5	606.9	1 448.4	67.5	94.6	1 542.9	1 268.4	2 811.4	7.4	6.1	54.9
Victoria	634.8	500.6	1 135.4	41.7	66.4	1 201.8	924.6	2 126.4	6.2	5.5	56.5
Queensland	522.6	402.6	925.2	32.8	49.0	974.2	669.7	1 643.9	5.9	5.0	59.3
South Australia	173.1	166.6	339.7	15.0	20.8	360.4	288.5	649.0	8.0	5.8	55.5
Western Australia	245.5	225.9	471.4	9.2	16.5	487.9	345.4	833.3	3.6	3.4	58.6
Tasmania	53.2	49.4	102.6	4.6	6.3	108.9	93.0	201.9	7.9	5.8	53.9
Northern Territory	33.4	10.9	44.2	*0.5	*0.8	45.0	28.1	73.1	*1.6	*1.7	61.5
Australian Capital Territory	59.7	28.3	88.1	1.9	3.0	91.1	44.1	135.2	3.1	3.3	67.4
Australia	2 563.7	1 991.1	4 554.8	173.3	257.4	4 812.2	3 661.9	8 474.1	6.3	5.3	56.8
PERSONS											
New South Wales	2 386.2	885.1	3 271.3	145.4	189.3	3 460.6	2 078.5	5 539.1	5.7	5.5	62.5
Victoria	1 816.8	709.6	2 526.4	100.7	139.8	2 666.2	1 496.0	4 162.2	5.3	5.2	64.1
Queensland	1 519.1	563.5	2 082.5	72.6	99.0	2 181.5	1 079.7	3 261.2	4.6	4.5	66.9
South Australia	510.5	231.9	742.4	39.7	51.1	793.5	482.6	1 276.1	7.2	6.4	62.2
Western Australia	775.0	301.4	1 076.4	27.6	38.8	1 115.1	547.9	1 663.0	3.4	3.5	67.1
Tasmania	156.2	68.1	224.3	10.7	13.4	237.7	157.2	394.8	6.4	5.6	60.2
Northern Territory	81.0	17.9	98.9	*2.0	*2.3	101.2	51.4	152.7	*2.4	*2.3	66.3
Australian Capital Territory	143.2	41.3	184.5	4.9	7.2	191.7	72.1	263.8	3.3	3.7	72.7
Australia	7 387.9	2 818.7	10 206.7	403.5	540.8	10 747.4	5 965.4	16 712.8	5.2	5.0	64.3

* estimate is subject to sampling variability too high for most practical purposes

	EMPLOYED		UNEMPLOYED		UNEMPLOYMENT RATE		Participation rate	Employment to population ratio	Unemployment ratio – looking for full-time work
	Full time	Total	Looking for f/t work	Total	Looking for f/t work	Total			
	'000	'000	'000	'000	%	%			
MALES									
January 2004	155.4	354.6	34.8	66.0	18.3	15.7	59.6	50.2	4.9
January 2005	161.5	359.4	34.8	65.7	17.7	15.5	59.6	50.4	4.9
2006									
January	154.1	348.0	36.6	70.7	19.2	16.9	58.5	48.6	5.1
February	154.9	350.5	36.3	70.3	19.0	16.7	58.7	48.9	5.1
March	155.7	353.4	36.3	69.5	18.9	16.4	59.0	49.3	5.1
April	156.2	355.8	36.4	68.9	18.9	16.2	59.2	49.6	5.1
May	156.4	357.4	36.4	68.5	18.9	16.1	59.3	49.8	5.1
June	156.4	358.4	36.2	68.2	18.8	16.0	59.4	49.8	5.0
July	156.2	358.4	35.6	68.1	18.6	16.0	59.3	49.8	5.0
August	156.1	358.2	34.9	67.7	18.3	15.9	59.2	49.8	4.9
September	156.1	358.3	34.2	66.8	18.0	15.7	59.0	49.8	4.8
October	155.9	358.7	33.7	65.4	17.8	15.4	58.8	49.8	4.7
November	155.5	359.5	33.5	63.7	17.7	15.1	58.7	49.8	4.6
December	154.9	360.4	33.4	62.1	17.8	14.7	58.5	49.9	4.6
2007									
January	154.6	361.9	33.4	60.5	17.8	14.3	58.4	50.0	4.6
FEMALES									
January 2004	81.5	353.1	29.2	64.5	26.3	15.5	61.6	52.0	4.3
January 2005	87.7	358.0	26.2	59.4	23.0	14.2	61.0	52.3	3.8
2006									
January	81.5	353.9	26.1	60.9	24.3	14.7	60.6	51.7	3.8
February	80.8	352.8	25.9	61.0	24.3	14.7	60.4	51.5	3.8
March	80.0	352.5	25.9	61.6	24.5	14.9	60.4	51.5	3.8
April	79.6	353.4	26.2	62.4	24.8	15.0	60.6	51.5	3.8
May	80.0	356.0	26.5	62.6	24.9	14.9	61.0	51.9	3.9
June	81.4	359.7	26.7	61.7	24.7	14.6	61.4	52.4	3.9
July	83.5	363.0	26.7	59.9	24.2	14.2	61.6	52.8	3.9
August	85.4	364.7	26.6	58.0	23.8	13.7	61.5	53.0	3.9
September	86.3	363.9	26.6	56.7	23.5	13.5	61.1	52.9	3.9
October	86.3	361.2	26.6	56.5	23.6	13.5	60.6	52.4	3.9
November	85.7	357.7	26.8	56.7	23.8	13.7	60.1	51.8	3.9
December	84.9	354.2	27.0	57.3	24.1	13.9	59.6	51.3	3.9
2007									
January	83.7	350.9	27.3	58.2	24.6	14.2	59.2	50.7	4.0
PERSONS									
January 2004	237.0	707.8	64.0	130.5	21.3	15.6	60.5	51.1	4.6
January 2005	249.2	717.4	61.0	125.1	19.7	14.9	60.3	51.4	4.4
2006									
January	235.6	701.9	62.7	131.6	21.0	15.8	59.5	50.1	4.5
February	235.7	703.4	62.3	131.2	20.9	15.7	59.5	50.2	4.4
March	235.7	705.9	62.2	131.1	20.9	15.7	59.7	50.3	4.4
April	235.8	709.3	62.6	131.3	21.0	15.6	59.9	50.5	4.5
May	236.3	713.5	62.9	131.1	21.0	15.5	60.1	50.8	4.5
June	237.8	718.0	62.8	129.9	20.9	15.3	60.3	51.1	4.5
July	239.7	721.4	62.3	128.0	20.6	15.1	60.4	51.3	4.4
August	241.5	722.9	61.5	125.7	20.3	14.8	60.3	51.4	4.4
September	242.3	722.2	60.8	123.5	20.1	14.6	60.0	51.3	4.3
October	242.1	719.9	60.4	121.9	20.0	14.5	59.7	51.1	4.3
November	241.2	717.2	60.3	120.5	20.0	14.4	59.3	50.8	4.3
December	239.8	714.6	60.4	119.4	20.1	14.3	59.0	50.6	4.3
2007									
January	238.3	712.8	60.7	118.7	20.3	14.3	58.8	50.4	4.3

PERSONS AGED 15–19 YEARS, Labour Force Status: Seasonally Adjusted

	EMPLOYED		UNEMPLOYED		UNEMPLOYMENT RATE		Participation rate	Employment to population ratio	Unemployment ratio – looking for full-time work
	Full time	Total	Looking for f/t work	Total	Looking for f/t work	Total			
	'000	'000	'000	'000	%	%			
MALES									
January 2004	158.0	357.4	34.4	66.9	17.9	15.8	60.1	50.6	4.9
January 2005	169.9	360.6	35.4	64.2	17.2	15.1	59.6	50.6	5.0
2006									
January	150.8	342.4	37.4	72.7	19.9	17.5	57.9	47.8	5.2
February	154.5	354.4	35.7	68.1	18.8	16.1	59.0	49.4	5.0
March	157.5	355.1	36.2	71.2	18.7	16.7	59.5	49.5	5.0
April	155.6	352.5	36.1	69.8	18.8	16.5	58.8	49.1	5.0
May	158.2	356.2	37.0	67.8	19.0	16.0	59.0	49.6	5.2
June	161.2	367.6	35.0	66.1	17.8	15.2	60.3	51.1	4.9
July	147.9	354.8	38.1	67.8	20.5	16.0	58.8	49.3	5.3
August	155.1	355.4	34.1	66.7	18.0	15.8	58.7	49.4	4.7
September	160.2	356.4	35.6	74.0	18.2	17.2	59.8	49.5	4.9
October	157.1	362.0	29.2	61.2	15.7	14.5	58.7	50.2	4.1
November	156.1	357.8	35.7	64.1	18.6	15.2	58.5	49.6	4.9
December	152.9	361.0	33.6	61.1	18.0	14.5	58.4	50.0	4.7
2007									
January	152.9	362.6	34.1	59.8	18.3	14.2	58.4	50.1	4.7
FEMALES									
January 2004	82.6	351.8	29.7	65.7	26.4	15.7	61.5	51.8	4.4
January 2005	84.4	356.5	23.6	54.1	21.8	13.2	60.0	52.1	3.4
2006									
January	85.6	360.0	26.7	59.5	23.8	14.2	61.3	52.6	3.9
February	83.3	352.4	26.1	60.4	23.8	14.6	60.3	51.5	3.8
March	76.5	352.4	24.6	56.8	24.3	13.9	59.7	51.4	3.6
April	81.3	351.4	27.4	70.3	25.2	16.7	61.5	51.3	4.0
May	77.7	350.7	25.9	60.9	25.0	14.8	60.0	51.1	3.8
June	75.6	359.6	28.4	63.2	27.3	14.9	61.6	52.4	4.1
July	88.9	366.3	24.0	58.3	21.3	13.7	61.8	53.3	3.5
August	88.2	367.4	29.4	59.8	25.0	14.0	62.1	53.4	4.3
September	83.9	369.2	25.1	54.8	23.0	12.9	61.6	53.7	3.6
October	88.8	360.7	26.9	54.0	23.2	13.0	60.2	52.4	3.9
November	85.6	351.7	25.5	56.0	23.0	13.7	59.1	51.0	3.7
December	82.8	356.8	28.2	59.6	25.4	14.3	60.3	51.6	4.1
2007									
January	83.6	347.9	27.4	59.9	24.7	14.7	59.0	50.3	4.0
PERSONS									
January 2004	240.6	709.2	64.0	132.6	21.0	15.8	60.8	51.2	4.6
January 2005	254.3	717.1	59.0	118.3	18.8	14.2	59.8	51.3	4.2
2006									
January	236.4	702.4	64.2	132.2	21.3	15.8	59.6	50.1	4.6
February	237.7	706.8	61.8	128.6	20.6	15.4	59.6	50.4	4.4
March	234.0	707.5	60.8	127.9	20.6	15.3	59.6	50.5	4.3
April	236.9	703.9	63.5	140.0	21.1	16.6	60.1	50.2	4.5
May	235.9	706.8	62.9	128.6	21.0	15.4	59.5	50.3	4.5
June	236.8	727.2	63.5	129.3	21.1	15.1	60.9	51.7	4.5
July	236.8	721.1	62.1	126.1	20.8	14.9	60.2	51.3	4.4
August	243.2	722.8	63.6	126.6	20.7	14.9	60.4	51.4	4.5
September	244.1	725.6	60.7	128.8	19.9	15.1	60.7	51.5	4.3
October	245.8	722.7	56.1	115.3	18.6	13.8	59.4	51.3	4.0
November	241.6	709.5	61.2	120.0	20.2	14.5	58.8	50.3	4.3
December	235.6	717.7	61.8	120.7	20.8	14.4	59.3	50.8	4.4
2007									
January	236.6	710.5	61.6	119.7	20.7	14.4	58.7	50.2	4.4

	EMPLOYED			UNEMPLOYED			Civilian population aged 15–19 years	UNEMPLOYMENT RATE		Participation rate	Unemployment to population ratio – looking for full-time work	
	Full time	Part time	Total	Looking for f/t work	Total	Labour force		Not in labour force	Looking for f/t work			Total
	'000	'000	'000	'000	'000	'000		'000	%			%
NOT ATTENDING FULL-TIME EDUCATION												
Males												
January 2004	148.8	57.4	206.2	40.8	47.4	253.5	41.6	295.2	21.5	18.7	85.9	13.8
January 2005	158.4	55.9	214.3	38.8	44.5	258.8	44.0	302.8	19.7	17.2	85.5	12.8
January 2006	146.6	59.9	206.5	39.9	47.8	254.3	47.1	301.4	21.4	18.8	84.4	13.2
January 2007	139.8	64.1	203.9	38.3	43.4	247.4	50.4	297.7	21.5	17.6	83.1	12.9
Females												
January 2004	78.7	77.2	155.9	32.0	38.0	193.9	44.4	238.3	28.9	19.6	81.4	13.4
January 2005	79.2	93.5	172.8	25.7	34.6	207.3	50.8	258.1	24.5	16.7	80.3	10.0
January 2006	80.3	83.0	163.3	25.0	29.9	193.2	41.1	234.3	23.7	15.5	82.5	10.7
January 2007	79.2	76.3	155.5	26.9	35.2	190.8	53.9	244.7	25.4	18.5	78.0	11.0
Persons												
January 2004	227.5	134.6	362.1	72.8	85.4	447.4	86.0	533.5	24.3	19.1	83.9	13.7
January 2005	237.6	149.5	387.0	64.6	79.1	466.1	94.8	560.9	21.4	17.0	83.1	11.5
January 2006	226.9	142.9	369.8	64.9	77.7	447.5	88.2	535.7	22.2	17.4	83.5	12.1
January 2007	219.1	140.4	359.4	65.3	78.7	438.1	104.3	542.5	23.0	18.0	80.8	12.0
ATTENDING FULL-TIME EDUCATION												
Males												
January 2004	22.0	140.7	162.7	*3.8	32.5	195.2	216.0	411.2	*14.8	16.7	47.5	*0.9
January 2005	25.7	132.2	157.9	7.3	32.7	190.6	219.5	410.0	22.1	17.1	46.5	1.8
January 2006	17.0	130.1	147.1	9.1	39.7	186.8	228.1	414.9	34.8	21.2	45.0	2.2
January 2007	26.0	144.7	170.6	6.3	28.6	199.3	226.9	426.1	19.6	14.4	46.8	1.5
Females												
January 2004	17.3	193.0	210.3	*4.1	37.4	247.7	192.6	440.3	*19.3	15.1	56.3	*0.9
January 2005	19.0	181.2	200.1	*2.9	27.4	227.5	198.3	425.8	*13.3	12.0	53.4	*0.7
January 2006	19.1	194.5	213.7	7.2	38.1	251.8	198.7	450.5	27.3	15.1	55.9	1.6
January 2007	18.0	191.6	209.6	6.0	33.0	242.6	204.4	447.0	25.1	13.6	54.3	1.3
Persons												
January 2004	39.4	333.6	373.0	8.0	69.9	442.9	408.6	851.5	16.8	15.8	52.0	0.9
January 2005	44.7	313.4	358.0	10.2	60.1	418.1	417.8	835.9	18.6	14.4	50.0	1.2
January 2006	36.2	324.6	360.8	16.2	77.8	438.6	426.8	865.3	31.0	17.7	50.7	1.9
January 2007	44.0	336.2	380.2	12.4	61.6	441.9	431.3	873.1	21.9	13.9	50.6	1.4
TOTAL												
Males												
January 2004	170.8	198.0	368.8	44.6	79.9	448.7	257.6	706.3	20.7	17.8	63.5	6.3
January 2005	184.1	188.1	372.2	46.1	77.2	449.4	263.5	712.9	20.0	17.2	63.0	6.5
January 2006	163.6	190.0	353.6	49.0	87.5	441.1	275.2	716.3	23.0	19.8	61.6	6.8
January 2007	165.8	208.7	374.6	44.7	72.1	446.6	277.2	723.9	21.2	16.1	61.7	6.2
Females												
January 2004	96.0	270.2	366.2	36.2	75.4	441.6	237.0	678.6	27.4	17.1	65.1	5.3
January 2005	98.2	274.7	372.9	28.6	62.0	434.8	249.1	683.9	22.6	14.2	63.6	4.2
January 2006	99.5	277.5	377.0	32.2	68.0	445.0	239.7	684.7	24.4	15.3	65.0	4.7
January 2007	97.2	267.9	365.1	33.0	68.2	433.4	258.3	691.7	25.3	15.7	62.7	4.8
Persons												
January 2004	266.8	468.2	735.0	80.8	155.3	890.3	494.6	1 385.0	23.2	17.4	64.3	5.8
January 2005	282.2	462.8	745.1	74.7	139.1	884.2	512.6	1 396.8	20.9	15.7	63.3	5.4
January 2006	263.1	467.5	730.6	81.2	155.5	886.1	514.9	1 401.0	23.6	17.5	63.2	5.8
January 2007	263.0	476.6	739.7	77.6	140.3	880.0	535.6	1 415.6	22.8	15.9	62.2	5.5

* estimate is subject to sampling variability too high for most practical purposes

	EMPLOYED			UNEMPLOYED			Civilian population aged 15–19 years	UNEMPLOYMENT RATE		Participation rate	Unemployment to population ratio – looking for full-time work	
	Full time	Part time	Total	Looking for f/t work	Total	Labour force		Not in labour force	Looking for f/t work			Total
	'000	'000	'000	'000	'000	'000		'000	%			%
NOT ATTENDING FULL-TIME EDUCATION												
New South Wales	61.9	45.5	107.4	21.5	26.8	134.2	41.6	175.8	25.8	20.0	76.3	12.2
Victoria	44.5	27.2	71.7	12.8	16.2	87.8	23.4	111.2	22.3	18.4	79.0	11.5
Queensland	55.7	34.1	89.9	15.0	17.1	107.0	17.8	124.8	21.3	16.0	85.8	12.1
South Australia	12.9	11.2	24.1	7.4	8.0	32.1	6.8	38.9	36.2	24.9	82.5	18.9
Western Australia	32.0	16.2	48.2	5.3	6.6	54.8	9.2	64.0	14.1	12.0	85.6	8.2
Tasmania	5.8	3.2	9.0	2.0	2.3	11.3	2.0	13.2	26.0	20.0	85.1	15.3
Northern Territory	3.1	*0.7	3.8	*0.3	*0.3	4.1	2.6	6.8	*8.7	*7.2	61.1	*4.4
Australian Capital Territory	3.1	2.2	5.3	*1.0	*1.5	6.8	*0.9	7.7	*25.0	*21.8	88.1	*13.4
Australia	219.1	140.4	359.4	65.3	78.7	438.1	104.3	542.5	23.0	18.0	80.8	12.0
ATTENDING FULL-TIME EDUCATION												
New South Wales	15.4	94.3	109.7	*5.8	21.1	130.8	154.4	285.2	*27.4	16.2	45.9	*2.0
Victoria	7.2	91.0	98.3	*2.0	16.4	114.6	117.4	232.0	*21.8	14.3	49.4	*0.9
Queensland	8.4	77.6	86.1	*0.9	9.5	95.6	67.2	162.9	*9.4	10.0	58.7	*0.5
South Australia	2.1	25.0	27.0	*2.4	6.6	33.6	31.2	64.8	*53.3	19.6	51.9	*3.6
Western Australia	8.9	32.1	41.0	*0.9	5.1	46.1	37.4	83.6	*9.3	11.1	55.2	*1.1
Tasmania	*1.0	7.1	8.1	*0.1	*1.1	9.2	11.7	21.0	*9.0	*12.4	44.0	*0.5
Northern Territory	*0.3	1.4	1.7	*—	*—	1.7	6.6	8.3	*—	*—	20.4	*—
Australian Capital Territory	*0.7	7.7	8.4	*0.3	1.8	10.2	5.3	15.4	*29.7	17.3	65.8	*1.9
Australia	44.0	336.2	380.2	12.4	61.6	441.9	431.3	873.1	21.9	13.9	50.6	1.4
TOTAL												
New South Wales	77.2	139.8	217.0	27.3	47.9	265.0	196.0	461.0	26.1	18.1	57.5	5.9
Victoria	51.7	118.2	169.9	14.8	32.5	202.4	140.8	343.2	22.2	16.1	59.0	4.3
Queensland	64.2	111.8	176.0	15.9	26.7	202.6	85.0	287.6	19.9	13.2	70.5	5.5
South Australia	15.0	36.2	51.2	9.7	14.6	65.7	38.0	103.7	39.3	22.2	63.4	9.4
Western Australia	40.9	48.3	89.2	6.2	11.7	100.9	46.7	147.6	13.1	11.6	68.4	4.2
Tasmania	6.8	10.3	17.1	2.1	3.4	20.5	13.7	34.2	23.9	16.6	59.9	6.2
Northern Territory	3.4	2.1	5.5	*0.3	*0.3	5.8	9.2	15.1	*8.1	*5.1	38.7	*2.0
Australian Capital Territory	3.8	9.9	13.7	*1.3	3.2	17.0	6.2	23.2	*25.9	19.1	73.3	*5.7
Australia	263.0	476.6	739.7	77.6	140.3	880.0	535.6	1 415.6	22.8	15.9	62.2	5.5

* estimate is subject to sampling variability too high for most practical purposes

— nil or rounded to zero (including null cells)

WHAT IF...? REVISIONS TO TREND ESTIMATES

EFFECT OF NEW SEASONALLY ADJUSTED ESTIMATES ON TREND ESTIMATES

TREND REVISIONS

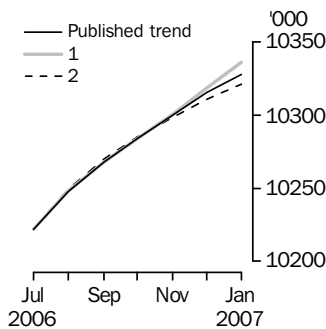
Each time new seasonally adjusted estimates become available, trend estimates are revised. This revision is a combined result of the concurrent seasonal adjustment process and the application of surrogates of the Henderson average to the seasonally adjusted series (see paragraphs 24 to 32 of the Explanatory Notes).

The examples in the tables below show two illustrative scenarios and the consequent revisions to previous trend estimates of employment and the unemployment rate. The revisions in the scenarios below are only due to the use of surrogates of the Henderson average, as the impact of revision of the seasonally adjusted estimates can not be estimated in advance.

- (1) The February seasonally adjusted estimate is *higher* than the January estimate by:
0.26% for employment
1.80% for the unemployment rate
- (2) The February seasonally adjusted estimate is *lower* than the January estimate by:
0.26% for employment
1.80% for the unemployment rate

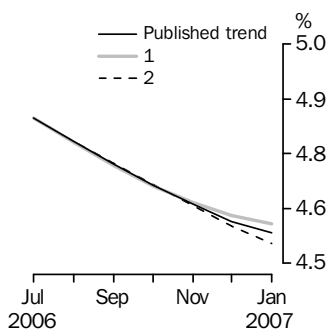
The percentage changes of 0.26% and 1.80% were chosen because they represent the average absolute monthly percentage changes in employment and the unemployment rate respectively.

EMPLOYMENT



		WHAT IF NEXT MONTH'S SEASONALLY ADJUSTED ESTIMATE IS:	
		(1) 10 361.6 i.e. rises by 0.26%	(2) 10 307.9 i.e. falls by 0.26%
		<i>Trend as published</i>	
2006			
October	10 284.0	10 284.1	10 285.0
November	10 300.0	10 300.5	10 298.0
December	10 315.3	10 318.4	10 310.5
2007			
January	10 327.9	10 335.8	10 320.8

UNEMPLOYMENT RATE



		WHAT IF NEXT MONTH'S SEASONALLY ADJUSTED ESTIMATE IS:	
		(1) 4.6 i.e. rises by 1.80%	(2) 4.5 i.e. falls by 1.80%
		<i>Trend as published</i>	
2006			
October	4.7	4.7	4.7
November	4.6	4.6	4.6
December	4.6	4.6	4.6
2007			
January	4.6	4.6	4.5

EXPLANATORY NOTES

INTRODUCTION

1 This publication contains estimates of the civilian labour force derived from the Labour Force Survey component of the Monthly Population Survey. The full time series for estimates from this publication are also available electronically – see *Labour Force, Australia, Spreadsheets* (cat. no. 6202.0.55.001). More detailed estimates are released one week after this publication in various electronic formats – see *Labour Force, Australia, Detailed – Electronic Delivery* (cat. no. 6291.0.55.001) and *Labour Force, Australia, Detailed, Quarterly* (cat. no. 6291.0.55.003).

CONCEPTS, SOURCES AND METHODS

2 The conceptual framework used in Australia's Labour Force Survey aligns closely with the standards and guidelines set out in Resolutions of International Conferences of Labour Statisticians. Descriptions of the underlying concepts and structure of Australia's labour force statistics, and the sources and methods used in compiling the estimates, are presented in *Labour Statistics: Concepts, Sources and Methods* (cat. no. 6102.0.55.001) which is available on the ABS web site <<http://www.abs.gov.au>> (Methods, Classifications, Concepts & Standards).

LABOUR FORCE SURVEY

3 The Labour Force Survey is based on a multi-stage area sample of private dwellings (currently about 30,000 houses, flats, etc.) and a list sample of non-private dwellings (hotels, motels, etc.), and covers about 0.45% of the population of Australia. Information is obtained from the occupants of selected dwellings by specially trained interviewers.

4 The information is collected using computer-assisted interviewing (CAI), whereby responses are recorded directly onto an electronic questionnaire on a notebook computer. The CAI method was progressively implemented from October 2003 to August 2004, replacing the 'pen and paper' method previously used.

5 Households selected for the Labour Force Survey are interviewed each month for eight months, with one-eighth of the sample being replaced each month. The first interview is conducted face-to-face. Subsequent interviews are conducted by telephone (if acceptable to the respondent).

6 The interviews are generally conducted during the two weeks beginning on the Monday between the 6th and 12th of each month. The information obtained relates to the week before the interview (i.e. the reference week). Each year, to deal with operational difficulties involved with collecting and processing the Labour Force Survey around the Christmas and New Year holiday period, interviews for December start four weeks after November interviews start, and January interviews start five weeks after December interviews start. As a result, January interviewing may commence as early as the 8th or as late as the 14th, depending on the year. Occasionally, circumstances that present significant operational difficulties for survey collection can result in a change to the normal pattern for the start of interviewing.

7 Estimates from the Labour Force Survey are published first in this publication 31 days after the commencement of interviews for that month, with the exception of estimates for each December which are published 38 days after the commencement of interviews.

SCOPE OF SURVEY

8 The Labour Force Survey includes all persons aged 15 years and over except members of the permanent defence forces, certain diplomatic personnel of overseas governments customarily excluded from census and estimated population counts, overseas residents in Australia, and members of non-Australian defence forces (and their dependants) stationed in Australia.

COVERAGE

9 In the Labour Force Survey, coverage rules are applied which aim to ensure that each person is associated with only one dwelling, and hence has only one chance of selection. The coverage rules are necessarily a balance between theoretical and operational considerations. Nevertheless, the chance of a person being enumerated at two separate dwellings in the survey is considered to be negligible.

EXPLANATORY NOTES *continued*

POPULATION BENCHMARKS

10 Labour Force Survey estimates are calculated in such a way as to add up to independent estimates of the civilian population aged 15 years and over (population benchmarks). These population benchmarks are projections of the most recently released quarterly Estimated Resident Population (ERP) data. For information on the methodology used to produce the ERP see *Australian Demographic Statistics Quarterly* (cat. no. 3101.0). To create the population benchmarks for the Labour Force Survey, the most recently released quarterly ERP estimates are projected forward one quarter past the period for which they are required. The projection is based on the historical pattern of each population component - births, deaths, interstate migration and overseas migration. By projecting one quarter past that needed for the current population benchmarks, demographic changes are smoothed in, thereby making them less noticeable in the population benchmarks.

11 The ERP series are revised annually in the March quarter issue of *Australian Demographic Statistics Quarterly* (cat. no. 3101.0), released in September each year, to incorporate more up to date information available for the population components. The revised ERP estimates are used to update the quarterly population projections used in creating the Labour Force Survey population benchmarks. Benchmarks already used in producing Labour Force Survey estimates are not updated. A process of smoothing is used in the creation of population benchmarks to reduce the effect of these annual revisions to ERP estimates on the Labour Force Survey population benchmarks.

12 The revisions to the ERP estimates published in the March quarter 2006 issue of *Australian Demographic Statistics Quarterly* (cat. no. 3101.0) were larger than expected. These revisions were reflected in the October, November and December 2006 population benchmarks, which increased by 29,100 each month. This increase was considerably larger than the average monthly increase over the previous 12 months.

13 Every five years the ERP series are revised to incorporate additional information available from the latest Census of Population and Housing. Following the incorporation of Census information, the ERP series prior to the latest Census are final and subject to no further revision. Labour Force Survey population benchmarks, and the estimates, are revised following this 5-yearly revision in the ERP. From the February 2004 issue of this publication, labour force estimates have been compiled using population benchmarks based on the results of the 2001 Census of Population and Housing. Revisions were made in that issue to historical labour force estimates from January 1999 to January 2004.

COMPARABILITY OF SERIES

14 From April 1986, the definition of employed persons was changed to include persons who worked without pay between 1 and 14 hours per week in a family business or on a farm (i.e. contributing family workers). For further information, see paragraphs 36 and 37 of the Explanatory Notes to the February 1987 issue of *Labour Force, Australia* (cat. no. 6203.0).

15 The ABS introduced telephone interviewing into the Labour Force Survey in August 1996. Implementation was phased in for each new sample group from August 1996 to February 1997. During the period of implementation, the new method produced different estimates than would have been obtained under the old methodology. The effect dissipated over the final months of implementation and was no longer discernible from February 1997. The estimates for February 1997 and onwards are directly comparable to estimates for periods prior to August 1996. For further details, see the feature article in the June 1997 issue of *Labour Force, Australia* (cat. no. 6203.0).

16 From April 2001 the Labour Force Survey has been conducted using a redesigned questionnaire containing additional data items and some minor definitional changes. The definition of unemployed persons was changed to include all persons who were waiting to start work and were available to start in the reference week. This change was introduced in February 2004, when historical unit record data were revised from

EXPLANATORY NOTES *continued*

COMPARABILITY OF SERIES

continued

April 2001 to January 2004. This revision created a small trend break at April 2001 in unemployed persons and unemployment rate series. For further details, see *Information Paper: Forthcoming Changes to Labour Force Statistics* (cat. no. 6292.0).

17 Core labour force series were revised in April 2001 for the period April 1986 to March 2001 for the remaining definitional changes introduced with the redesigned questionnaire, to reduce the impact of the changes on labour force series. For further details, see *Information Paper: Implementing the Redesigned Labour Force Survey Questionnaire* (cat. no. 6295.0) and *Information Paper: Questionnaires Used in the Labour Force Survey* (cat. no. 6232.0).

SURVEY SAMPLE REDESIGN

18 The Labour Force Survey sample was last reselected using information collected in the 2001 Census of Population and Housing.

19 The bulk of the new sample was phased in over the period November 2002 to June 2003, with one-eighth of this portion of the sample being introduced every month. The remainder of the sample (about 18% of the total), which covers less settled areas of Australia and non-private dwellings was rotated in full for New South Wales, Victoria, Tasmania, Northern Territory and Australian Capital Territory in November 2002, and for Queensland, South Australia and Western Australia in December 2002. Such a pattern of implementation means that any changes to labour force estimates due to differences between the two samples, or any other influences, were spread over the eight months.

20 For further details, see *Information Paper: Labour Force Survey Sample Design* (cat. no. 6269.0) and *Technical Report: New Labour Force Survey sample selections: analysis of the effect on estimates* in the October 2003 issue of *Australian Labour Market Statistics* (cat. no. 6105.0).

RELIABILITY OF ESTIMATES

21 Two types of error are possible in an estimate based on a sample survey: sampling error and non-sampling error.

22 Sampling error occurs because a sample, rather than the entire population, is surveyed. One measure of the likely difference resulting from not including all dwellings in the survey is given by the standard error. There are about two chances in three that a sample estimate will differ by less than one standard error from the figure that would have been obtained if all dwellings had been included in the survey, and about nineteen chances in twenty that the difference will be less than two standard errors. Standard errors of estimates for the latest month and of estimates of movements since the previous month are shown on pages 28 and 29. Standard errors of other estimates and other movements may be determined by using information in the paper *Labour Force Survey Standard Errors* (cat. no. 6298.0) which is available free of charge on the ABS web site <<http://www.abs.gov.au>> (Statistics).

23 Non-sampling error arises from inaccuracies in collecting, recording and processing the data. Every effort is made to minimise reporting error by the careful design of questionnaires, intensive training and supervision of interviewers, and efficient data processing procedures. Non-sampling error also arises because information cannot be obtained from all persons selected in the survey. The Labour Force Survey receives a high level of co-operation from individuals in selected dwellings, with the average response rate over the last year being 96%. See Glossary for definition of response rate.

SEASONAL ADJUSTMENT AND TREND ESTIMATION

24 Seasonal adjustment is a means of removing the estimated effects of normal seasonal variation from the series so that the effects of other influences on the series can be more clearly recognised. Seasonal adjustment does not aim to remove the irregular or non-seasonal influences which may be present in any particular month. This means that month-to-month movements of the seasonally adjusted estimates may not be reliable indicators of trend behaviour.

EXPLANATORY NOTES *continued*

SEASONAL ADJUSTMENT AND TREND ESTIMATION *continued*

25 The Labour Force Survey uses the concurrent seasonal adjustment method to derive seasonal factors. Concurrent seasonal adjustment uses data up to the current month to estimate seasonal factors for the current and all previous months. This process can result in revisions each month to estimates for earlier periods. However, in most instances, the only noticeable revisions will be to the seasonally adjusted estimates for the previous month and one year prior to the current month.

26 Seasonal adjustment is able to remove the effect of events which occur at the same time in the survey every year. However, there are some events, like holidays, which are not always at the same time in the survey cycle or which are not at the same time across Australia. The effects of these types of events on LFS estimates cannot in all cases be removed, because the pattern of their effects cannot be determined. However, two events which are adjusted for in the seasonally adjusted series are the January interview start date and the timing of Easter.

27 For more information on concurrent seasonal adjustment and survey proximity to holiday periods, see *Information Paper: Forthcoming Changes to Labour Force Statistics* (cat. no. 6292.0) released in December 2003.

28 While seasonal factors for the complete time series are estimated each month, they will continue to be reviewed annually at a more detailed level to take into account each additional year's original data. This annual review will not normally result in significant changes to published estimates. The review is usually conducted in February each year with the results released in the February issue of this publication. In 2007 the review will be delayed until the second quarter.

29 The smoothing of seasonally adjusted series to produce 'trend' series reduces the impact of the irregular component of the seasonally adjusted series. These trend estimates are derived by applying a 13-term Henderson-weighted moving average to all months except the last six. The last six monthly trend estimates are obtained by applying surrogates of the Henderson average to the seasonally adjusted series. Trend estimates are used to analyse the underlying behaviour of a series over time.

30 While this smoothing technique enables estimates to be produced for the latest month, it does result in revisions in addition to those caused by the revision of seasonally adjusted estimates. Generally, revisions due to the use of surrogates of the Henderson average become smaller, and after three months have a negligible impact on the series.

31 Trend estimates are published for the Northern Territory in table 10 and for the Australian Capital Territory in table 11. Unadjusted series for the two territories have shown, historically, a high degree of variability, which can lead to considerable revisions to the seasonally adjusted estimates each month when seasonal factors are estimated. For this reason, seasonally adjusted estimates are not currently published for the two Territories. In addition, caution should be exercised in the interpretation of trend estimates for the two territories, particularly for the three most recent months, where revisions may be relatively large.

32 For further information, see *A Guide to Interpreting Time Series – Monitoring Trends* (cat. no. 1349.0) or contact the Assistant Director, Time Series Analysis on (02) 6252 6345.

RELATED PUBLICATIONS

33 Users may also wish to refer to *Australian Labour Market Statistics* (cat. no. 6105.0). This publication contains additional tables and a detailed list of related publications. For further information about this publication, please contact the Assistant Director, Labour Market Statistics on (02) 6252 7636.

34 ABS Information about the labour market can be found on the Labour theme page on the ABS web site <<http://www.abs.gov.au>>(Themes), or from ABS Bookshops.

EXPLANATORY NOTES *continued*

RELATED PUBLICATIONS

continued

35 Current publications and other products released by the ABS are listed in the *Catalogue of Publications and Products* (cat. no. 1101.0). The Catalogue is available from any ABS office or the ABS web site <<http://www.abs.gov.au>> (Statistics). The ABS also issues a daily Release Advice on the web site (Future Releases) which details products to be released in the week ahead.

DATA AVAILABLE ON REQUEST

36 As well as the statistics included in this and related publications, the ABS may have other relevant data available. Inquiries should be made to the Labour Force contact officer on (02) 6252 6525 or to any ABS office.

EFFECTS OF ROUNDING

37 Estimates have been rounded and discrepancies may occur between sums of the component items and totals.

38 Estimates of movement shown in this publication are obtained by taking the difference of unrounded estimates. The movement estimate is then rounded to one decimal place. Therefore where a discrepancy occurs between the reported movement and the difference of the rounded estimates, the reported movement will be more accurate.

SYMBOLS AND OTHER USAGES

39 SYMBOLS AND OTHER USAGES

pts percentage points

STANDARD ERRORS

STANDARD ERRORS

The estimates in this publication are based on information gained from the occupants of a sample survey of dwellings. Because the entire population is not surveyed, the published estimates are subject to sampling error. The most common way of quantifying such sampling error is to calculate the standard error for the published estimate or statistic. For more information, see paragraph 22 of the Explanatory Notes.

LEVEL ESTIMATES

To illustrate, let us say the published level estimate for employed persons aged 15–19 years is 700,000 and the associated standard error is 9,800. The standard error is then used to interpret the level estimate of 700,000. For instance, the standard error of 9,800 indicates that:

- There are approximately two chances in three that the real value falls within the range 690,200 to 709,800 (700,000 + or – 9,800)
- There are approximately nineteen chances in twenty that the real value falls within the range 680,400 to 719,600 (700,000 + or – 19,600).

The real value in this case is the result we would obtain if we could enumerate the total population.

The following table shows the standard errors for this month's level estimates.

AUSTRALIA												
		NSW	Vic.	Qld	SA	WA	Tas.	NT	ACT	Males	Females	Persons
Aged 15 years and over												
Employed												
Full time	'000	21.7	17.3	14.5	6.5	8.7	3.0	4.1	2.2	26.9	18.6	32.7
Part time	'000	13.1	10.6	9.6	4.4	5.8	2.0	1.2	1.3	9.8	16.0	19.7
Total	'000	24.9	20.2	15.6	7.6	9.6	3.6	4.9	2.3	29.1	26.1	36.9
Unemployed												
Looking for f/t work	'000	8.2	6.1	4.7	2.6	2.4	1.2	0.6	0.7	8.5	7.3	11.5
Looking for p/t work	'000	4.2	3.6	2.8	1.4	1.5	0.5	0.2	0.5	3.9	5.0	6.5
Total	'000	9.4	7.3	5.5	2.9	2.8	1.4	0.7	0.9	9.5	9.0	13.4
Labour force	'000	25.5	20.6	15.7	7.8	9.7	3.7	5.0	2.3	29.7	26.8	37.6
Not in labour force	'000	23.2	17.9	13.3	6.6	9.1	3.3	5.0	2.0	24.3	29.5	34.9
Unemployment rate												
Looking for f/t work	pts	0.3	0.3	0.3	0.5	0.3	0.7	0.7	0.5	0.2	0.3	0.1
Looking for p/t work	pts	0.5	0.5	0.5	0.6	0.5	0.8	1.1	1.1	0.4	0.2	0.2
Total	pts	0.3	0.3	0.2	0.4	0.2	0.6	0.6	0.4	0.2	0.2	0.1
Participation rate	pts	0.5	0.5	0.5	0.6	0.6	0.9	3.3	0.9	0.4	0.3	0.2
Aged 15–19 years												
Employed												
Full time	'000	3.4	2.6	2.5	1.0	1.7	0.5	0.5	0.4	4.6	3.7	5.6
Part time	'000	4.3	3.6	3.4	1.5	1.8	0.6	0.4	0.6	5.1	5.6	7.4
Total	'000	5.4	4.4	4.4	1.8	2.6	0.8	0.6	0.7	6.6	6.5	9.2
Unemployed												
Looking for f/t work	'000	3.3	2.1	2.1	1.3	1.1	0.5	0.2	0.4	3.6	3.1	4.8
Looking for p/t work	'000	2.8	2.4	1.7	0.9	1.0	0.4	—	0.4	2.8	3.2	4.3
Total	'000	4.5	3.3	2.8	1.6	1.5	0.6	0.2	0.6	4.6	4.5	6.5
Labour force	'000	6.1	4.9	4.8	2.1	2.9	0.9	0.6	0.7	7.2	7.1	10.1
Not in labour force	'000	7.0	5.4	3.9	2.0	2.6	1.0	1.3	0.6	7.0	6.7	10.3
Unemployment rate												
Looking for f/t work	pts	3.0	3.1	2.6	4.8	2.2	5.1	4.8	6.5	1.6	2.2	1.3
Looking for p/t work	pts	1.7	1.7	1.4	2.1	1.9	3.1	—	3.5	1.2	1.0	0.8
Total	pts	1.6	1.6	1.3	2.3	1.5	2.9	3.1	3.3	1.0	1.0	0.7
Participation rate	pts	1.3	1.4	1.7	2.0	1.9	2.7	3.8	3.2	1.0	1.0	0.7
Unemployment to population ratio – looking for f/t work	pts	0.7	0.6	0.7	1.2	0.7	1.4	1.2	1.5	0.5	0.4	0.3

— nil or rounded to zero (including null cells)

STANDARD ERRORS *continued*

MOVEMENT ESTIMATES

The following example illustrates how to use the standard error to interpret a movement estimate. Let us say that one month the published level estimate for females employed part time in Australia is 1,890,000; the next month the published level estimate is 1,900,000 and the associated standard error for the movement estimate is 10,600. The standard error is then used to interpret the published movement estimate of 10,000. For instance, the standard error of 10,600 indicates that:

- There are approximately two chances in three that the real movement between the two months falls within the range -600 to 20,600 (10,000 + or - 10,600)
- There are approximately nineteen chances in twenty that the real movement falls within the range -11,200 to 31,200 (10,000 + or - 21,200).

The following table shows the standard errors for this month's movement estimates.

		AUSTRALIA										
		NSW	Vic.	Qld	SA	WA	Tas.	NT	ACT	Males	Females	Persons
Aged 15 years and over												
Employed												
Full time	'000	13.9	10.8	9.5	4.0	5.5	1.8	1.6	1.6	17.1	12.3	21.8
Part time	'000	8.5	6.6	5.5	2.6	3.3	1.1	0.8	0.9	7.2	10.9	13.1
Total	'000	16.7	13.0	12.1	5.6	7.4	2.3	1.8	1.8	18.8	16.8	26.5
Unemployed												
Looking for f/t work	'000	8.0	6.1	5.1	2.6	2.5	1.1	0.5	0.8	8.9	7.6	12.0
Looking for p/t work	'000	4.5	3.7	2.9	1.4	1.6	0.6	0.3	0.5	4.1	5.4	6.9
Total	'000	9.2	7.3	6.0	3.0	3.0	1.3	0.5	0.9	9.9	9.4	14.1
Labour force	'000	17.2	13.4	12.5	5.9	7.6	2.5	1.9	1.9	19.2	17.3	27.2
Not in labour force	'000	16.2	13.0	10.5	5.0	6.3	2.1	1.8	1.7	14.5	18.9	25.4
Unemployment rate												
Looking for f/t work	pts	0.3	0.3	0.3	0.5	0.3	0.8	0.7	0.5	0.2	0.3	0.1
Looking for p/t work	pts	0.5	0.5	0.5	0.6	0.5	0.8	1.7	1.1	0.5	0.3	0.2
Total	pts	0.3	0.3	0.3	0.4	0.3	0.6	0.7	0.5	0.2	0.2	0.1
Participation rate	pts	0.3	0.3	0.4	0.5	0.5	0.6	1.2	0.7	0.2	0.2	0.2
Aged 15-19 years												
Employed												
Full time	'000	2.7	2.0	2.1	0.8	1.4	0.4	0.3	0.3	3.6	2.9	4.3
Part time	'000	3.6	2.8	2.6	1.1	1.5	0.5	0.3	0.4	4.0	4.4	5.6
Total	'000	4.3	3.3	3.2	1.3	1.9	0.6	0.4	0.5	5.0	5.0	6.8
Unemployed												
Looking for f/t work	'000	3.3	2.2	2.2	1.3	1.1	0.5	0.1	0.4	3.8	3.2	5.0
Looking for p/t work	'000	2.9	2.7	1.8	1.0	1.1	0.4	0.2	0.5	3.1	3.5	4.7
Total	'000	4.5	3.6	3.0	1.5	1.6	0.6	0.2	0.6	4.8	4.8	6.9
Labour force	'000	4.6	3.6	3.4	1.5	2.0	0.7	0.5	0.6	5.4	5.3	7.3
Not in labour force	'000	4.7	3.5	2.8	1.3	1.8	0.6	0.7	0.5	5.1	5.0	6.9
Unemployment rate												
Looking for f/t work	pts	3.2	3.4	2.7	5.1	2.4	5.7	4.3	6.8	1.7	2.5	1.4
Looking for p/t work	pts	1.8	1.8	1.5	2.3	2.0	3.1	7.1	3.7	1.2	1.1	0.8
Total	pts	1.7	1.7	1.4	2.4	1.6	3.1	3.9	3.4	1.0	1.1	0.8
Participation rate	pts	1.0	1.1	1.2	1.4	1.4	1.9	3.1	2.4	0.7	0.8	0.5
Unemployment to population ratio - looking for f/t work												
	pts	0.7	0.7	0.8	1.2	0.8	1.4	0.7	1.6	0.5	0.5	0.4

GLOSSARY

Actively looking for work	Includes writing, telephoning or applying in person to an employer for work; answering an advertisement for a job; checking factory noticeboards or the touchscreens at the Centrelink offices; being registered with Centrelink as a jobseeker; checking or registering with any other employment agency; advertising or tendering for work; and contacting friends or relatives.
Attending full-time education	Persons aged 15–24 years enrolled at secondary or high school or enrolled as a full time student at a Technical and Further Education (TAFE) college, university, or other educational institution in the reference week.
Attending school	Persons aged 15–19 years enrolled at secondary or high school in the reference week.
Attending tertiary educational institution full time	Persons aged 15–24 years enrolled full time at a TAFE college, university, or other educational institution in the reference week, except those persons aged 15–19 years who were still attending school.
Civilian population aged 15 years and over	All usual residents of Australia aged 15 years and over except members of the permanent defence forces, certain diplomatic personnel of overseas governments customarily excluded from census and estimated population counts, overseas residents in Australia, and members of non-Australian defence forces (and their dependants) stationed in Australia.
Employed	All persons aged 15 years and over who, during the reference week: <ul style="list-style-type: none">■ worked for one hour or more for pay, profit, commission or payment in kind in a job or business, or on a farm (comprising employees, employers and own account workers); or■ worked for one hour or more without pay in a family business or on a farm (i.e. contributing family workers); or■ were employees who had a job but were not at work and were:<ul style="list-style-type: none">■ away from work for less than four weeks up to the end of the reference week; or■ away from work for more than four weeks up to the end of the reference week and received pay for some or all of the four week period to the end of the reference week; or■ away from work as a standard work or shift arrangement; or■ on strike or locked out; or■ on workers' compensation and expected to return to their job; or■ were employers or own account workers, who had a job, business or farm, but were not at work.
Employment to population ratio	For any group, the number of employed persons expressed as a percentage of the civilian population in the same group.
Full-time workers	Employed persons who usually worked 35 hours or more a week (in all jobs) and those who, although usually working less than 35 hours a week, worked 35 hours or more during the reference week.
Labour force	For any group, persons who were employed or unemployed, as defined.
Labour force status	A classification of the civilian population aged 15 years and over into employed, unemployed or not in the labour force, as defined. The definitions conform closely to the international standard definitions adopted by the International Conferences of Labour Statisticians.
Not in labour force	Persons who were not in the categories employed or unemployed as defined.
Participation rate	For any group, the labour force expressed as a percentage of the civilian population aged 15 years and over in the same group.
Part-time workers	Employed persons who usually worked less than 35 hours a week (in all jobs) and either did so during the reference week, or were not at work in the reference week.

GLOSSARY *continued*

Response rate	The number of fully responding dwellings expressed as a percentage of the total number of dwellings excluding sample loss. Examples of sample loss include: dwellings where all persons are out of scope and/or coverage; vacant dwellings; dwellings under construction; dwellings converted to non-dwellings; derelict dwellings; and demolished dwellings.
Seasonally adjusted series	A time series of estimates with the estimated effects of normal seasonal variation removed. See Explanatory Notes 24 to 28 for more detail.
Trend series	A smoothed seasonally adjusted series of estimates. See Explanatory Notes 29 to 32 for more detail.
Unemployed	Persons aged 15 years and over who were not employed during the reference week, and: <ul style="list-style-type: none">■ had actively looked for full-time or part-time work at any time in the four weeks up to the end of the reference week and were available for work in the reference week; or■ were waiting to start a new job within four weeks from the end of the reference week and could have started in the reference week if the job had been available then.
Unemployed looking for full-time work	Unemployed persons who: <ul style="list-style-type: none">■ actively looked for full-time work; or■ were waiting to start a new full-time job.
Unemployed looking for part-time work	Unemployed persons who: <ul style="list-style-type: none">■ actively looked for part-time work only; or■ were waiting to start a new part-time job.
Unemployment rate	For any group, the number of unemployed persons expressed as a percentage of the labour force in the same group.
Unemployment to population ratio	For any group, the number of unemployed persons expressed as a percentage of the civilian population in the same group.

FOR MORE INFORMATION . . .

INTERNET **www.abs.gov.au** the ABS web site is the best place for data from our publications and information about the ABS.

LIBRARY A range of ABS publications are available from public and tertiary libraries Australia wide. Contact your nearest library to determine whether it has the ABS statistics you require, or visit our web site for a list of libraries.

INFORMATION AND REFERRAL SERVICE

Our consultants can help you access the full range of information published by the ABS that is available free of charge from our web site, or purchase a hard copy publication. Information tailored to your needs can also be requested as a 'user pays' service. Specialists are on hand to help you with analytical or methodological advice.

PHONE 1300 135 070

EMAIL client.services@abs.gov.au

FAX 1300 135 211

POST Client Services, ABS, GPO Box 796, Sydney NSW 2001

FREE ACCESS TO STATISTICS

All statistics on the ABS web site can be downloaded free of charge.

WEB ADDRESS www.abs.gov.au



2620200001072

ISSN 1448 2819

RRP \$25.00

